



Fellsmere

**CITY COUNCIL WORKSHOP MEETING
SEPTEMBER 24, 2009 – 7:00 P.M.
AGENDA**

CALL TO ORDER

ROLL CALL

PLEDGE OF ALLEGIANCE TO THE FLAG

OLD BUSINESS:

1. **City Hall** Master Plan.

ADJOURNMENT

Anyone who may wish to appeal any decision which may be made at this meeting will need to ensure that a verbatim record of the proceedings is made, which record includes the testimony and evidence upon which the appeal will be based. Any person who may need special accommodations for this meeting must contact the City Clerk (772) 571-0116 at least 48 hours in advance of the meeting. Cualquiera que desea apelar cualquier decisión que se puede hacer en esta reunión, necesitará tomar en cuenta que un registro al pie de la letra de los actos se hace, que el registro incluye el testimonio y la evidencia sobre que la apelación se basará. Cualquier persona que puede necesitar los alojamientos especiales para esta reunión debe contactar al Empleado de la Ciudad (772) 571-0116 por lo menos 48 horas en avance de la reunión.

CO_WS_090924AGENDA.DOC

New (Old) City Hall Master Plan and Streetscape Amenities Plan

Engineers: Carter and Associates, Inc.

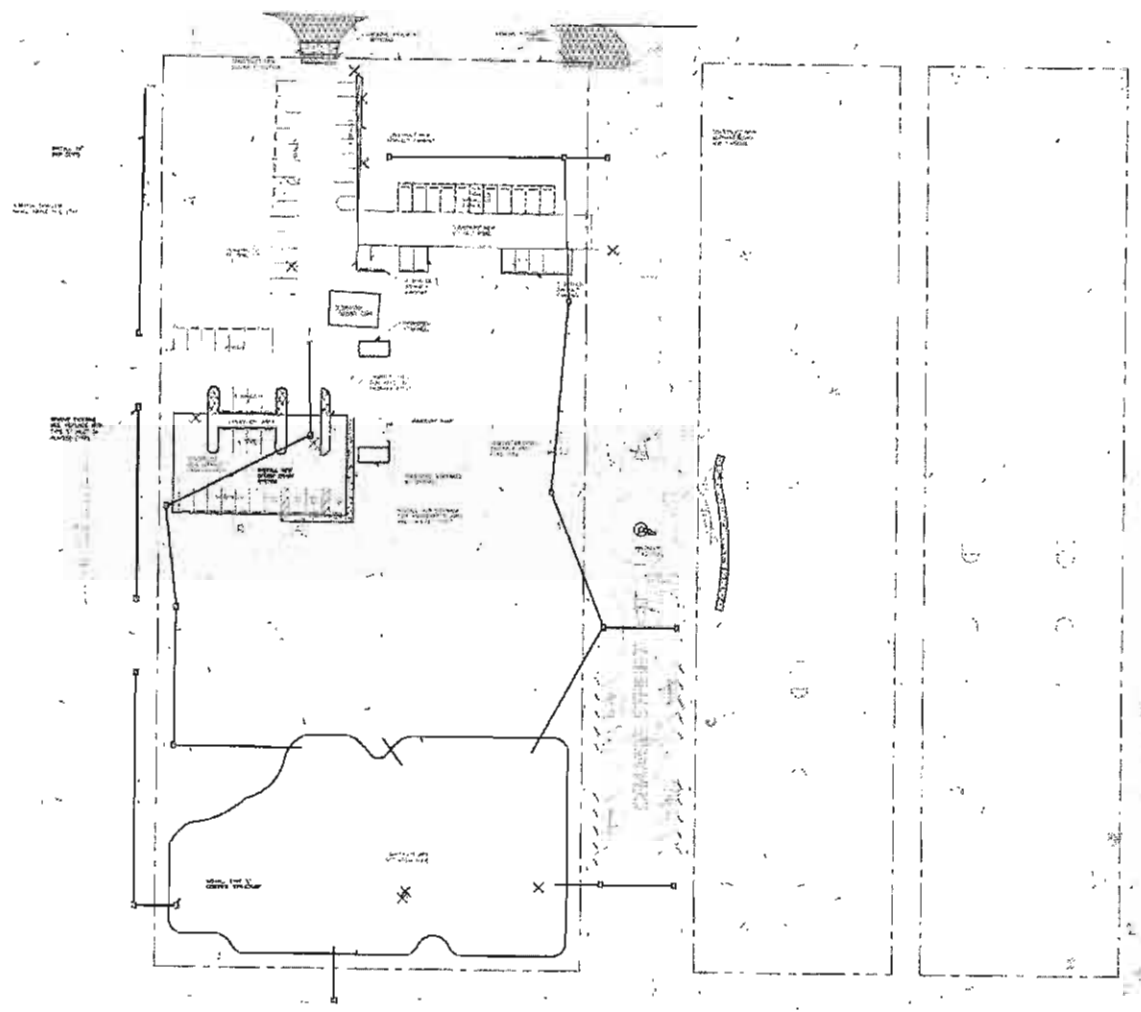
Planner: Lawandales Planning Affiliates, Inc.

October 16, 2008/September 24, 2009



LEGEND

- EXISTING PAVEMENT
- EXISTING DRIVEWAYS
- EXISTING SIDEWALKS
- NEW PAVEMENT TO BE PROVIDED
- EXISTING PROPOSED TO BE REMOVED
- NEW SIDEWALKS
- NEW DRIVEWAYS
- NEW UTILITIES



NO.	REVISION	BY	DATE

CITY OF FELLSMERE
 21 SOUTH CYPRESS STREET
 FELLSMERE, FL 32984
 TEL: (772) 611-0118
 FAX: (772) 611-1801

CAI CONSULTING ENGINEERS AND LAND SURVEYORS
 CARTER ASSOCIATES, INC.
 1708 21st STREET, VERO BEACH, FL 32980
 TEL: (772) 562-4191 FAX: (772) 562-7180

GEORGE A. JONES
 FLORIDA LICENSE NO. 49027
 CARTER ASSOCIATES, INC.
 DATE: 05/18/2009
 EEA 206 / 1.0.209

DATE: APRIL 7, 2009
 PROJECT: 08102
 DRAWN BY: RD
 APPROVED BY: GAB
 IN CHARGE: GAB
 FILE NAME: 08102.dwg
 PLOT # : 180104
 P.B. & NO. : 173001.3

FELLSMERE CITY COMPLEX MASTER PLAN
 EXHIBIT
 CONCEPTUAL PAVING & DRAINAGE
 IMPROVEMENTS PLAN

SHEET
 1
 Dwg # 17173-01

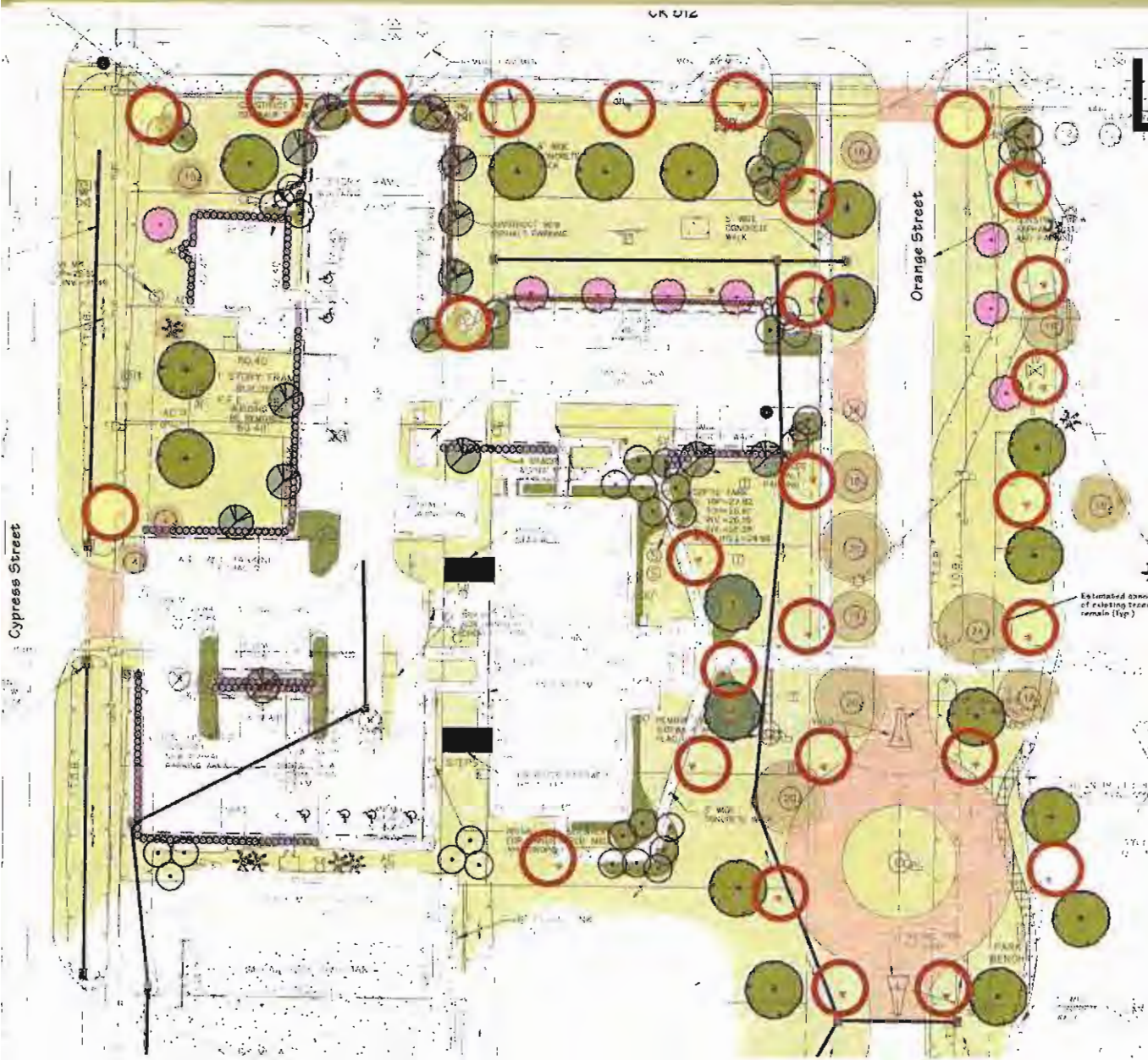
Traffic Circle

- OPTIONS**
City Logo or Clock
Or Flag Pole or
Fountain



Lighting Plan

Same lighting as chosen for entry



OPTIONS: Lighting



Double
mount

Gettysburg - 9930

The curved roof line and six sides provides the historic look, either on a post top or hung from the decorative arm of a Sternberg pole. This large fixture tops out at 17" x 42". The rust color shown adds to the vintage look. Either Type III or Type V light distribution is available. The 9920, scales 14-3/4" x 36-3/4".



Description

2-1910/478PM/3414FP4/BCC This twin tear drop acorn post assembly illuminates parking areas in downtown Loveland CO. They have over 75 single arm and twin arm styles which are finished in Sternberg's hand brushed verde green antique process. The twin acorns are 36" apart on our decorative model 478 arm and scale beautifully on our 14" tall fluted Georgetown pole. The 100 watt high pressure sodium light gives a soft appearance yet maximizes the light output for high visibility in the parking areas.



Description

The Trinity Broadcasting Network in Costa Mesa CA has over 40 of these Old Town acorn assemblies throughout this world headquarters estate. These triple acorns are adorned with our PBDR polished brass decorative ring and mounted on model 6236 scroll arms. The pole is our model 3410DFP4 10' tall Georgetown and is finished in our hand brushed Verde Green



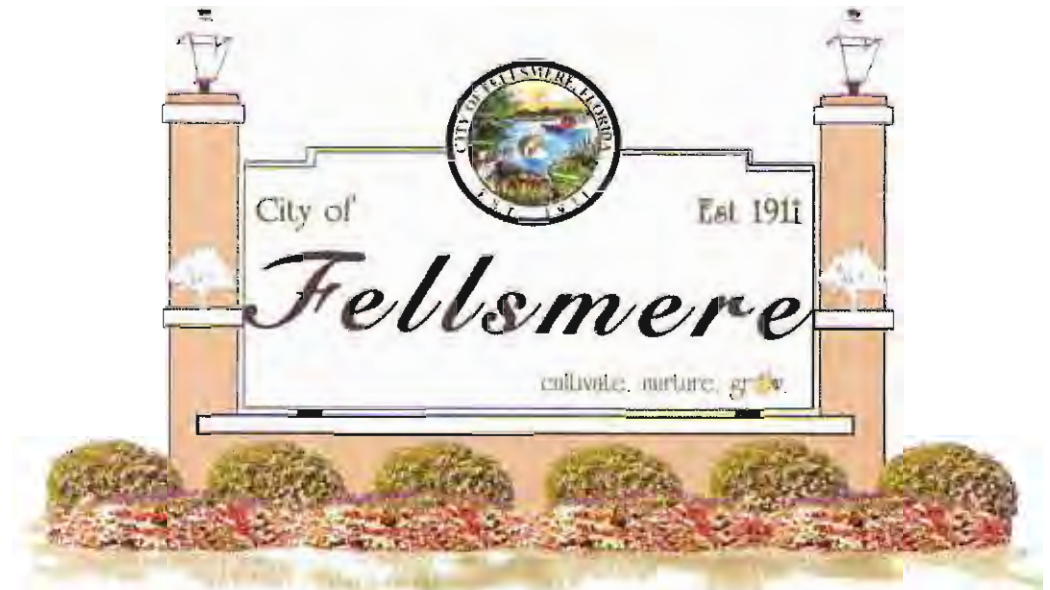
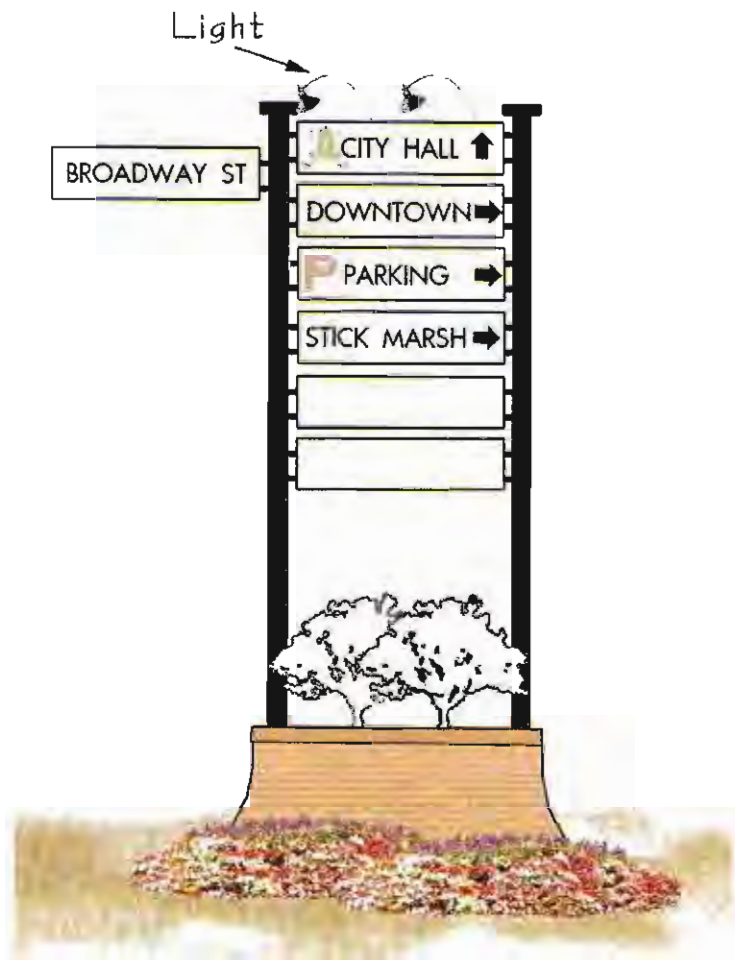
Description

3-8878PM/8830/6712T The Bay Harbor residents appreciate the well-lit and well designed colonial light fixtures which accent this condominium community in Santa Ana CA. The three arm mounted fixtures and single post top fixture provide an impressive design statement on this large scale cast aluminum tapered pole. The post is 12' tall and has a 15" diameter base. These 54 assemblies are equipped with 35 watt high pressure sodium.



Approved Signs

Concept 1B

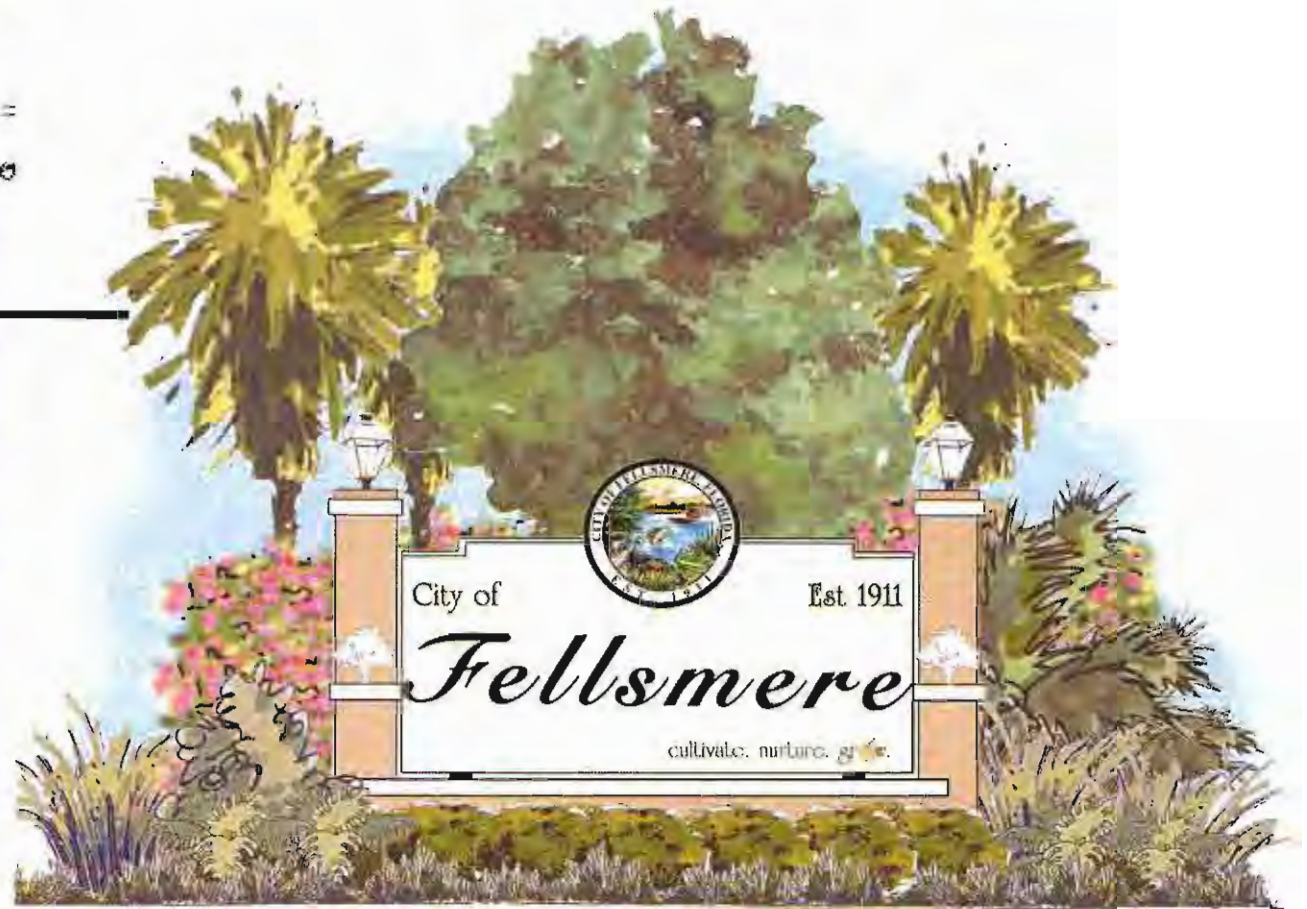
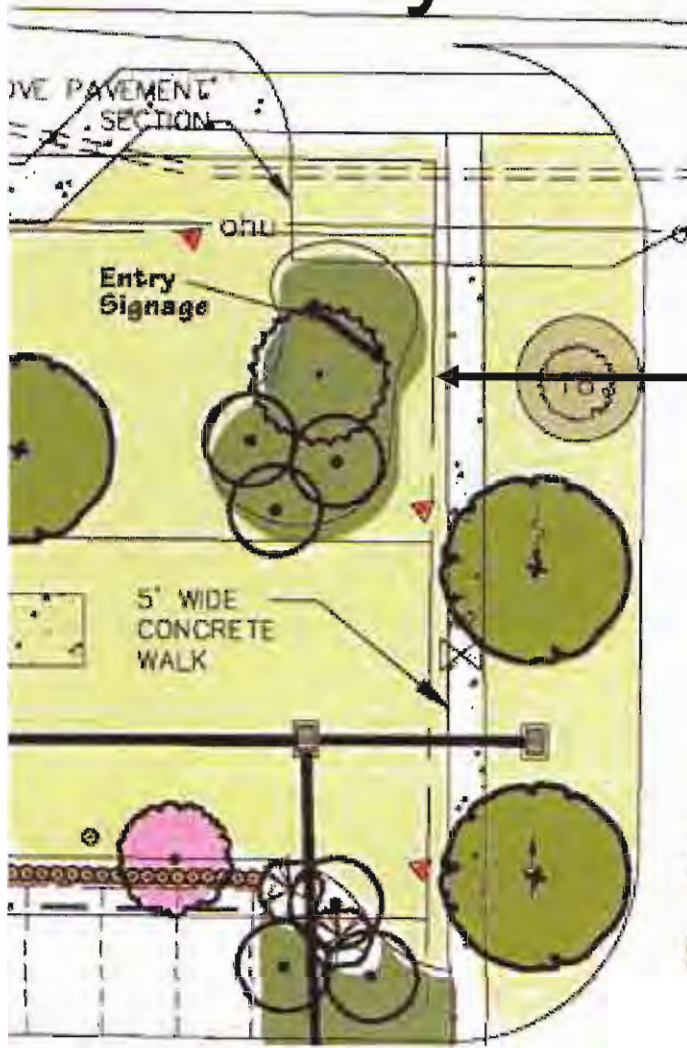


Sign Concept 2A



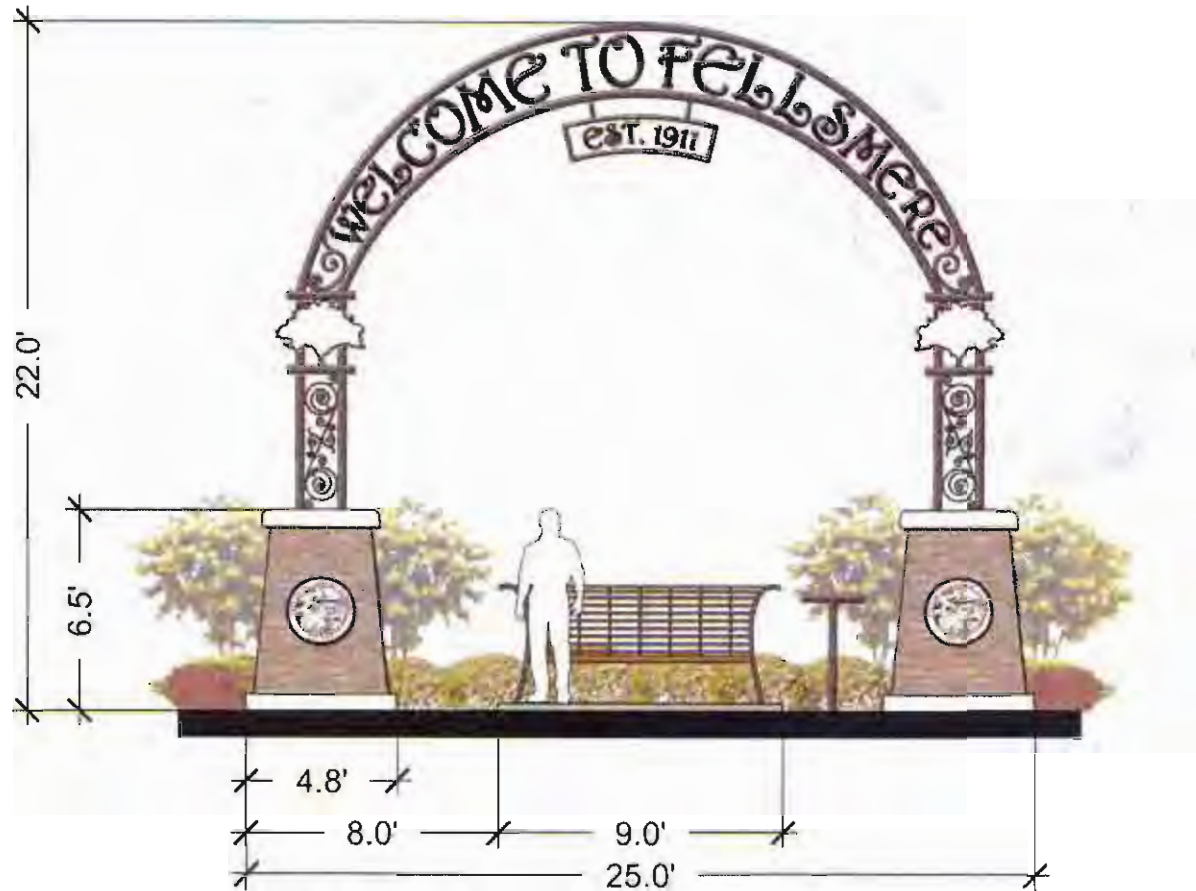
Entry Features

- Incorporate Entry Sign
- Lighting
- Sidewalks



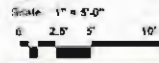
Sign Concept Rendering

Entry Feature Options



Fellsmere City Gateway

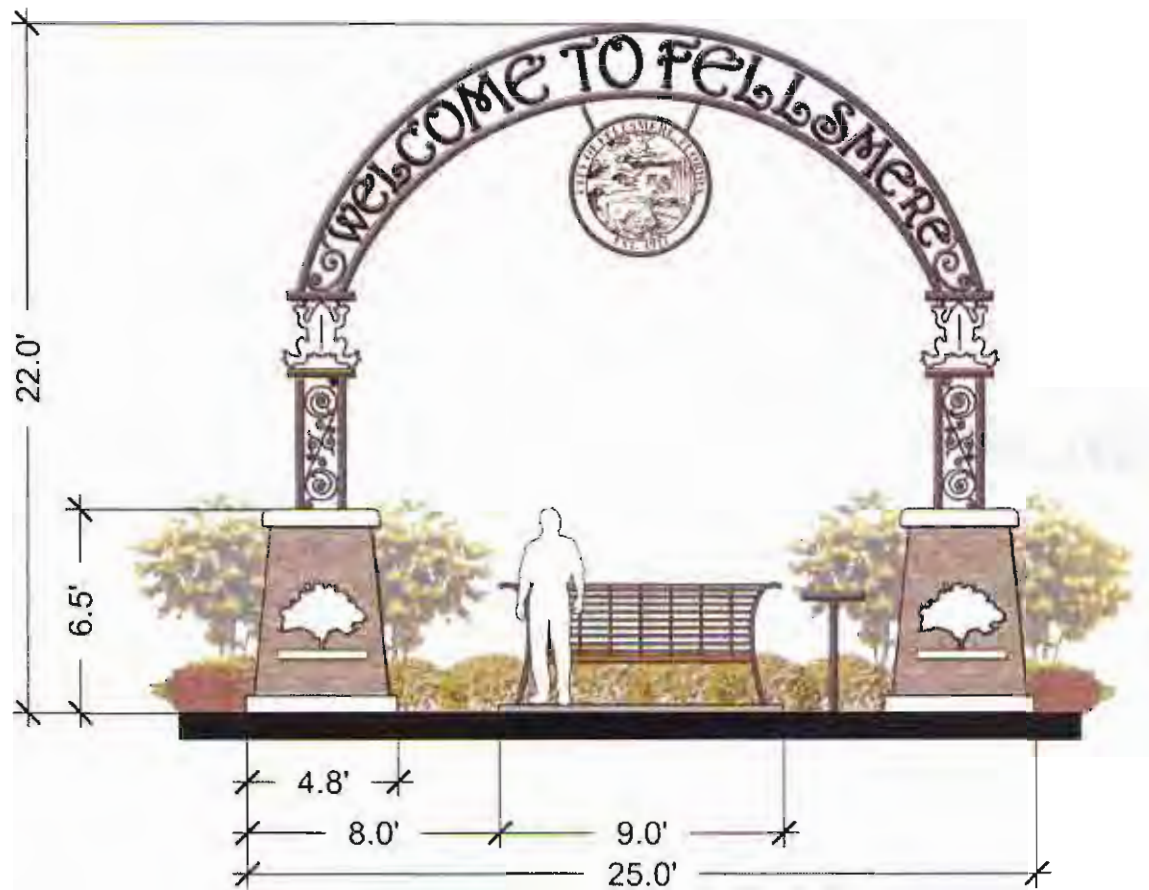
LAWANDALES PLANNING AFFILIATES, INC.
Planning for Community



Concept-1
09-14-2009

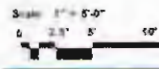


Entry Feature Options



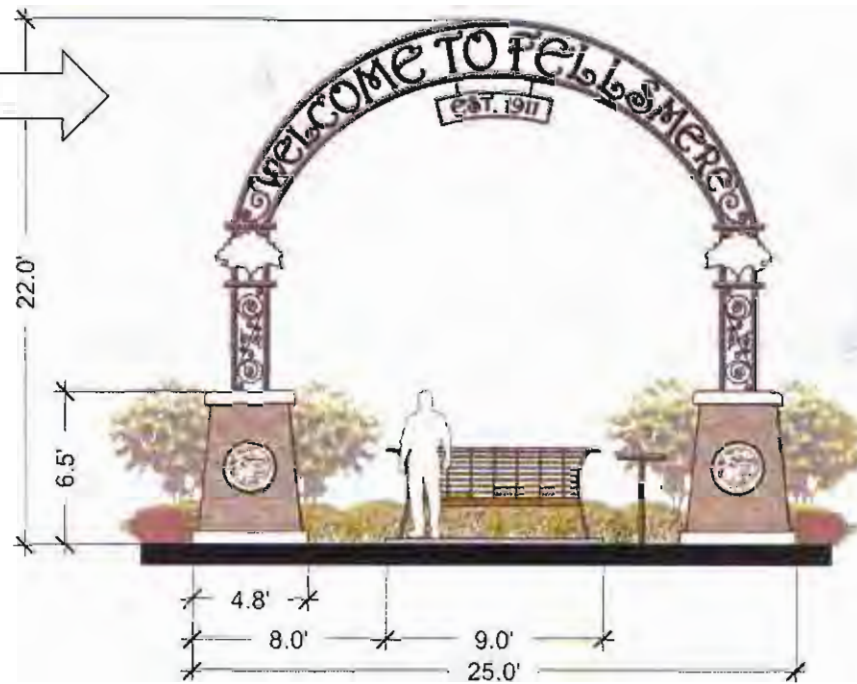
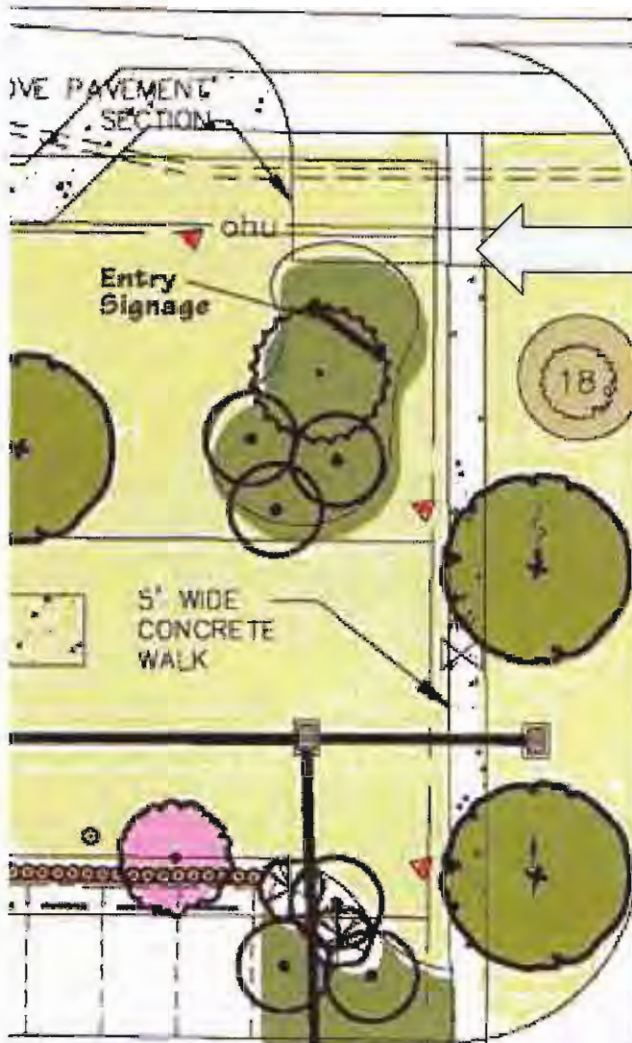
Fellsmere City Gateway

LAWANDALES PLANNING AFFILIATES, INC.
Planning for Community



Concept-2
09-14-2009



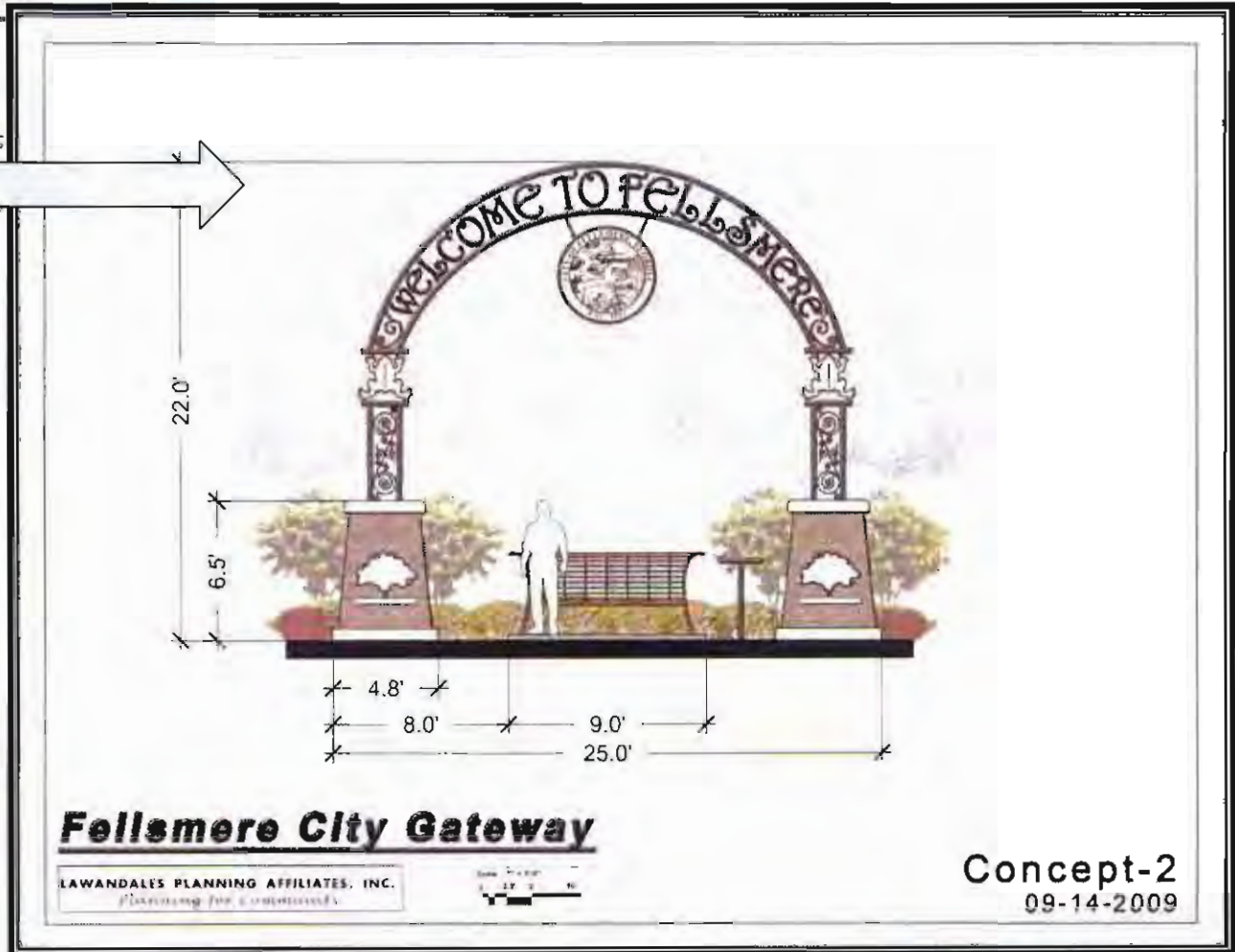
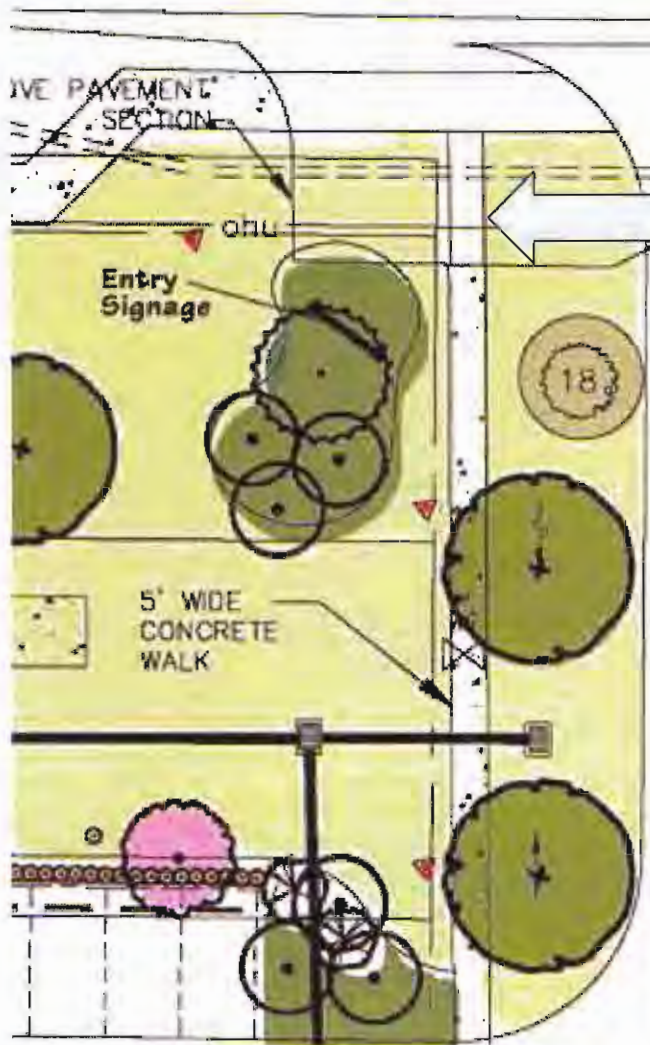


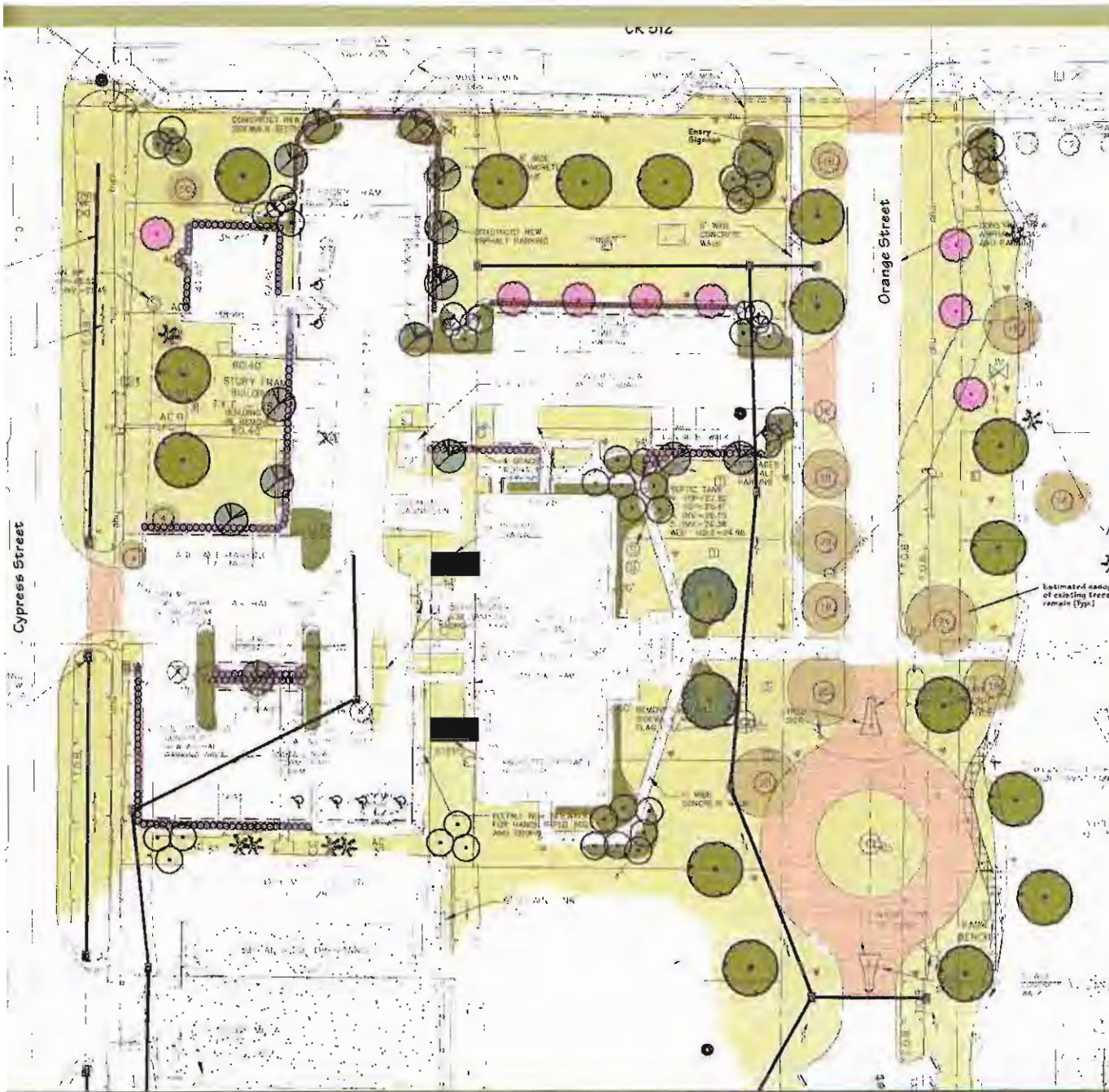
Fellsmere City Gateway

LAWANDALE'S PLANNING AFFILIATES, INC.
Planning for a better life

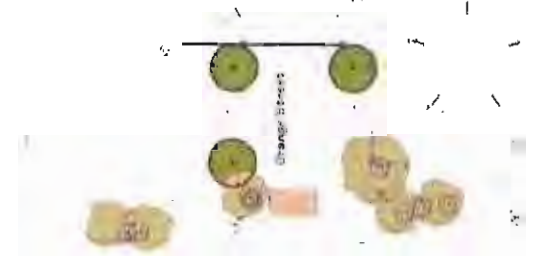


Concept-1
 09-14-2009





Pavers

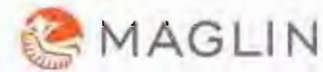


California Avenue



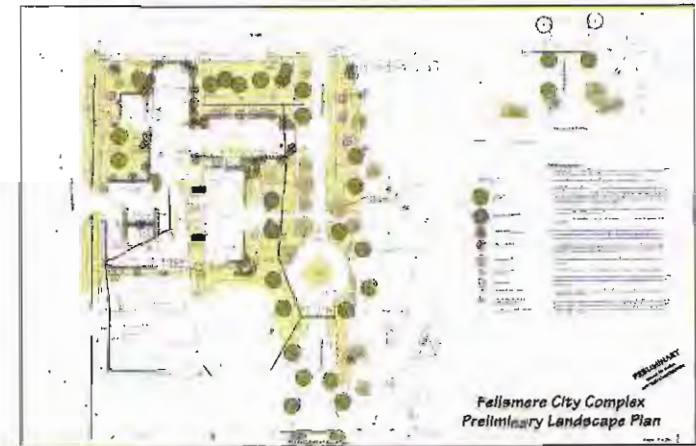
Site Furnishings

- To be added to...



DECISIONS

- SITE PLAN
- TRAFFIC CIRCLE
- SEAL VS. CLOCK VS. FLAG POLE
- ENTRY SIGNAGE: SHORT MONUMENT VS ARCH VS START OVER
- SITE FURNISHINGS



Order of Magnitude Costs

- Phasing
 - Stormwater Amenity in SW and other drainage improvements: \$170-190K
 - Parking lots, Orange Street improvements, traffic circle (?): \$205-215K
 - Landscaping, Entry Sign, Decorative lighting, Clock, streetscape features: \$50-250K



Discussion points:

“Green”

- LED lighting
- Recycled materials
- Solar panels for lighting and sign lighting
- Places for recycling products
- Cigarette disposal
- Pervious pavement/pavers

Action Items/Other

- Next steps:
 - Final Engineering and Landscape drawings
 - Order of Magnitude Cost Estimates
 - Present to PZ and Council
 - Authorization to bid
- Funding

