



**NOVEMBER, 2018: SUPPLEMENTAL UPDATE
FOR
HYDRAULIC ANALYSIS
OF
WASTEWATER TRANSMISSION SYSTEM
FOR
THE CITY OF FELLSMERE, FLORIDA
OCTOBER, 2005 – ORIGINAL PUBLICATION**

**I hereby certify that the information
contained herein is true and accurate
to the best of my knowledge and belief**

Patrick Walther, P.E. Fl. Reg. No. 39667



**CARTER ASSOCIATES, INC.
1708 21st STREET
VERO BEACH, FLORIDA 32960
(772) 562-4191**

TABLE OF CONTENTS

Fellsmere Wastewater Transmission System Update..... Page 1

Evaluation of Lift Stations No. 1 & 2..... Pages 2 & 3

List of Exhibits:

- **Exhibit “A”:** City of Fellsmere Monthly Billing Service Recap June, 2018
- **Exhibit “B”:** Map Showing Connections to Lift Station No. 1
- **Exhibit “C”:** Peak Factor Determination (from 10 State Recommended Standards for Wastewater Facilities)
- **Exhibit “D”:** Lift Station No. 1 Pump Curve
- **Exhibit “E”:** Future Development Map (North County Recycling Site Sketch)

Appendix “A” – Hydraulic Modeling Results Summary and Model Output

Appendix “B” – Updated Nodal Map (Aerial)

FELLSMERE WASTEWATER TRANSMISSION SYSTEM UPDATE

General:

This supplement is an update to the report titled "Hydraulic Analysis of Wastewater Transmission System for the City of Fellsmere, Florida", dated October 2005. In addition to updating the model, this supplement addresses and evaluates the City owned Lift Stations No.1 & 3 for their ability to handle existing and future connections.

Since the hydraulic model was first generated in 2005, three additional lift stations have been connected to the force main network. The new lift stations are located at Fellsmere Elementary School (LS No. 17), Dollar General Store (LS No. 18) and Fellsmere Inn (LS No. 15).

In reference to the 2005 report, the force main network is a system with independent variables at each pump station (varying levels in wet wells resulting in varying pump out rates). Because of this, it is important to understand there an infinite number of operating conditions for the manifold wastewater system. Consequently, the operating criteria used to judge the acceptability and effectiveness of each pump station considers the extreme conditions as follows:

1. When examined at the extreme low pressure condition (pump station operating alone in the manifold) the pump station must pump in excess of its peak design flow.
2. When examined at the extreme high pressure condition (all pump stations operating in the manifold) the pump station must pump at or near its average daily flow.

While the low pressure pump station condition will occur often in a system of this size, it is realized the high pressure condition will occur infrequently, usually only after a prolonged power outage. It should be noted that some lift stations are equipped with back-up generators which will enable them to operate during a power outage. Because of this, it is less likely that all pumps would be running at the same time following a power outage. However, by utilizing these two lift station criteria, it is known the pump stations will operate between the two resulting pumping rates utilizing the existing manifold system.

The hydraulic modeling results of the updated Fellsmere Wastewater Transmission system are presented in Appendix "A". The updated system nodal map is presented on an aerial background as Appendix "B".

EVALUATION OF LIFT STATIONS NO. 1 & 2

A. Lift Station No. 1 (LS1)

The City's "Monthly Billing Service Recap" from June, 2018, indicates 27 Equivalent Residential Units (ERUs) are connected to LS1. (See Exhibits "A" & "B")

- Average Daily Flow = $27 \text{ ERU} \times 300 \text{ gpd/ERU} = 8,100 \text{ gpd} = 5.6 \text{ gpm}$
- Peak Factor = 4.3 (See Exhibit "C")
- Peak Design Flow = $4.3 \times 5.6 \text{ gpm} = 24 \text{ gpm}$
- Model Results (See Exhibit "D"): LS1 operating alone, $Q = 284 \text{ gpm}$; note: $284 > 24$
LS1 w/ all pumps on, $Q = 22 \text{ gpm}$; note : $22 > 5.6$
Consequently, both acceptance criteria are met.
- LS1 Connections Capacity (based on average flow criteria)
 $= 27 \text{ ERU}/5.6 \text{ gpm} \times 22 \text{ gpm} = 106 \text{ ERU}$
- Future Available ERUs = $106 \text{ ERU} - 27 \text{ ERU} = 79 \text{ ERUs}$

Notes:

1. The LS1 start-up report indicates the design condition was $250 \text{ gpm} @ 72' \text{ TDH}$; while measured flows were approximately 511 gpm .
2. Design information on LS1 wet well was not available and therefore the wet well was not evaluated. However, because peak design flow to LS1 (24 gpm) is lower than the design condition (250 gpm) we can assume the wet well has adequate capacity.

B. Lift Station No. 3 (LS3)

The City's "Monthly Billing Service Recap" from June, 2018, indicates a total of 561 ERUs are connected to LS3.

- Average Daily Flow = $561 \text{ ERU} \times 300 \text{ gpd/ERU} = 168,300 \text{ gpd} = 117 \text{ gpm}$
- Peak Factor = 3.6 (See Exhibit "C")
- Peak Design Flow = $3.6 \times 117 \text{ gpm} = 421 \text{ gpm}$
- Model Results: LS3 w/ all pumps on receives: $Q = 591 \text{ gpm}$;
Based on LS3 start up, LS3 discharges a flow of $Q = 599 \text{ gpm}$
Note: $599 > 421 > 117$
Consequently, both acceptance criteria are met.

- LS3 Connections Capacity (based on peak flow criteria)
= 561 ERU/421 gpm x 599 gpm = 798 ERUs
- Future Available ERUs = 798 ERU – 561 ERU = 237 ERUs

Notes:

1. The LS3 start-up report indicates the start-up measured condition was 599 gpm @ 76' TDH and the design condition was 320 gpm @ 88' TDH
2. Design information on LS3 wet well was not available and therefore the wet well was not evaluated. However, because the peak design flow to LS3 (421 gpm) is higher than the design condition (320 gpm), we recommend that the LS3 wet well be evaluated.

***Include Future Development (N. County Recycling Site – 313 Units: See Exhibit “E”)**

- Average Daily Flow = 313 ERUs x 300 gpd/ERU = 93,900 gpd = 65 gpm
- Total Average Flow from City w/ New Development = 117 gpm + 65 gpm = 182 gpm
- Peak Factor = 3.5 (See Exhibit “C”)
- Peak Design Flow = 3.5 x 182 gpm = 637 gpm
- Model Results: LS3 w/ all pumps on or off, Q = 599 gpm; note : 599 > 182
However, 599 < 637
Consequently the acceptance criteria is met for the average flow condition but not for the peak flow condition. Improvements to LS3 would be required.

EXHIBITS

See Reverse

CITY OF FELLSMERE

Monthly Billing Service Recap

from 6/1/2018 to 6/30/2018

7/11/2018 11pm

Service	Count of Services	Consumption	Charges
Wastewater			
9201063014 <i>OLD</i> 21 S Cypress Street	06/29/18	2	\$48.34
9201063410 <i>School</i> 25 S Cypress Street	06/29/18	1	\$40.94
9201064717 <i>L.S.</i> 22 S Orange Street	06/29/18	6	\$273.59
9201097715 <i>R</i> 2 S Pine Street <i>Garcias</i>	06/29/18	5	\$294.14
9202140118 <i>T</i> 4 S Bay Street <i>Giuseppes</i>	06/29/18	5	\$249.42
9202193418 <i>M</i> 5 S Elm Street <i>Laundromat</i>	06/29/18	45	\$1,540.44
9202193621 <i>A</i> 6 S Oak Street <i>Gas station</i>	06/29/18	2	\$70.70
9202287811 <i>N</i> 37 S WILLOW STREET <i>Dance Hall</i>	06/29/18	1	\$24.17
9203335113 <i>F</i> 50 N Cypress Street	06/29/18	17	\$505.92
9203335113 <i>F</i> 50 N Cypress Street	06/29/18	17	\$450.02
9203338019 <i>F</i> 63 N Cypress Street <i>Maria Fell</i>	06/29/18	1	\$29.76
9203349765 <i>B</i> 130 N Broadway <i>Bar</i>	06/29/18	3	\$72.51
9203350617 <i>Q</i> 106 N Broadway <i>Grocery</i>	06/29/18	1	\$158.33
9203352910 <i>S</i> 62 N Broadway <i>Fire station</i>	06/29/18	2	\$104.24
9203353124 <i>S</i> 56 N Broadway <i>Oculina</i>	06/29/18	1	\$29.76
9203353219 <i>S</i> 56 N Broadway # 1/2 <i>Comm. Center</i>	06/29/18	1	\$29.76
9203353611 <i>O</i> 46 N Broadway <i>Gift store</i>	06/29/18	1	\$24.17
9203353819 <i>O</i> 44 N Broadway <i>Marsh</i>	06/29/18	13	\$610.48
9203354418 <i>O</i> 32 N Broadway <i>Museum</i>	06/29/18	2	\$48.34
9203354917 <i>O</i> 2 N Broadway <i>Gas station</i>	06/29/18	3	\$201.08
9203361418 <i>C</i> 107 N Broadway <i>Fellsmere Inn</i>	06/29/18	1	\$29.76
9203362518 <i>P</i> 133 N Broadway <i>-Retail</i>	06/29/18	2	\$65.11
9204000211 <i>E</i> 12896 CR 512	06/29/18	2	\$48.34
9204000300 <i>E</i> 12896 CR 512	06/29/18	2	\$59.52
9204000716 <i>L</i> 12196 CR 512 <i>- TCCH</i>	06/29/18	4	\$163.76
9204514023 <i>K</i> 11 N Willow Street <i>- Now 19 N. Willow</i>	06/29/18	4	\$102.27
9204516026 <i>Grace</i> 53 SONRISE PLACE	06/29/18	163	\$8,881.27
9204700900 <i>Need.</i> 71 SONRISE PLACE	06/29/18	80	\$2,414.34
9205002000 <i>G</i> 11010 CR 512 <i>- Aldea</i>	06/29/18	14	\$338.38
9205002262 <i>D</i> 12798 CR 512 <i>- restaurant</i>	06/29/18	3	\$145.18
9205002311 <i>I</i> 12740 CR 512 <i>- Dollar General</i>	06/29/18	3	\$83.69
9205002521 <i>J</i> 12285 CR 512 <i>- O.P. Hope</i>	06/29/18	3	\$78.10
9205003000 <i>G</i> 11020 CR 512 <i>Aldea</i>	06/29/18	1	\$24.17
9205003001 <i>D</i> 12820 CR 512 <i>- car wash</i>	06/29/18	3	\$167.54
9205004000 <i>G</i> 11030 CR 512	06/29/18	3	\$72.51
9205005003 <i>G</i> 11040 CR 512 <i>Aldea</i>	06/29/18	3	\$72.51
9205006000 <i>G</i> 11050 CR 512	06/29/18	4	\$96.68
9205500000 <i>H</i> 11200 CR 512 <i>The Preserv</i>	06/29/18	1	\$24.17
9206100110 10077 ESPERANZA CIR. # 1	06/29/18	1	\$35.35
9206100208 10077 ESPERANZA CIR. # 2	06/29/18	1	\$29.76
9206100314 10077 ESPERANZA CIR # 3	06/29/18	1	\$35.35
9206100403 10077 ESPERANZA CIR # 4	06/29/18	1	\$35.35
9206110037 10023 ESPERANZA CIR. # 3	06/29/18	1	\$52.12
9206110046 10023 ESPERANZA CIR. # 4	06/29/18	1	\$52.12
9206110101 10023 ESPERANZA CIR. # 1	06/29/18	1	\$40.94
9206110203 10023 ESPERANZA CIR. # 2	06/29/18	1	\$24.17
9206111019 10046 ESPERANZA CIR. # 1	06/29/18	1	\$40.94
9206111034 10046 ESPERANZA CIR. # 3	06/29/18	1	\$52.12
9206111047 10046 ESPERANZA CIR. # 4	06/29/18	1	\$40.94
9206111202 10046 ESPERANZA CIR. # 2	06/29/18	1	\$40.94
9206200019 10071 ESPERANZA CIR # 1	06/29/18	1	\$46.53
9206200205 10071 ESPERANZA CIR # 2	06/29/18	1	\$29.76
9206200402 10071 ESPERANZA CIR. # 4	06/29/18	1	\$40.94
9206203000 10071 ESPERANZA CIR. # 3	06/29/18	1	\$40.94
9206220018 10017 ESPERANZA CIR. # 1	06/29/18	1	\$46.53
9206220028 10017 ESPERANZA CIR. # 2	06/29/18	1	\$29.76

27 ERUs
connected to
LS1

Whispering Pines L.S.

Monthly Billing Service Recap

EXHIBIT "A" cont.

7/11/2018 1:11pm

from 6/1/2018 to 6/30/2018

Service	Count of Services	Consumption	Charges	
			\$35.35	
9206220039	10017 ESPERANZA CIR. # 3	06/29/18	1	\$40.94
9206220401	10017 ESPERANZA CIR. # 4	06/29/18	1	\$35.35
9206300104	10065 ESPERANZA CIR # 1	06/29/18	1	\$35.35
9206300202	10065 ESPERANZA CIR. # 2	06/29/18	1	\$35.35
9206330018	10011 ESPERANZA CIR. # 1	06/29/18	1	\$40.94
9206330026	10011 ESPERANZA CIR. # 2	06/29/18	1	\$35.35
9206400014	10059 ESPERANZA CIR. # 1	06/29/18	1	\$40.94
9206400027	10059 ESPERANZA CIR. # 2	06/29/18	1	\$40.94
9206400032	10059 ESPERANZA CIR. # 3	06/29/18	1	\$29.76
9206400400	10059 ESPERANZA CIR. # 4	06/29/18	1	\$46.53
9206440016	10005 ESPERANZA CIR. # 1	06/29/18	1	\$35.35
9206440027	10005 ESPERANZA CIR. # 2	06/29/18	1	\$52.12
9206440048	10005 ESPERANZA CIR. # 4	06/29/18	1	\$57.71
9206440302	10005 ESPERANZA CIR. # 3	06/29/18	1	\$40.94
9206500017	10053 ESPERANZA CIR. # 1	06/29/18	1	\$35.35
9206500046	10053 ESPERANZA CIR. # 4	06/29/18	1	\$29.76
9206500206	10053 ESPERANZA CIR. # 2	06/29/18	1	\$29.76
9206500314	10053 ESPERANZA CIR. # 3	06/29/18	1	\$29.76
9206500341	10004 ESPERANZA CIR. # 3	06/29/18	1	\$52.12
9206550019	10004 ESPERANZA CIR. # 1	06/29/18	1	\$29.76
9206550200	10004 ESPERANZA CIR. # 2	06/29/18	1	\$102.43
9206550450	10004 ESPERANZA CIR. # 4	06/29/18	1	\$35.35
9206600011	10047 ESPERANZA CIR. # 1	06/29/18	1	\$68.89
9206600029	10047 ESPERANZA CIR # 2	06/29/18	1	\$40.94
9206600301	10047 ESPERANZA CIR. # 3	06/29/18	1	\$35.35
9206600401	10047 ESPERANZA CIR. # 4	06/29/18	1	\$46.53
9206660101	10010 ESPERANZA CIR. # 1	06/29/18	1	\$35.35
9206660204	10010 ESPERANZA CIR. # 2	06/29/18	1	\$29.76
9206660304	10010 ESPERANZA CIR. # 3	06/29/18	1	\$40.94
9206660400	10010 ESPERANZA CIR. # 4	06/29/18	1	\$35.35
9206700103	10041 ESPERANZA CIR. # 1	06/29/18	1	\$40.94
9206700233	10041 ESPERANZA CIR. # 2	06/29/18	1	\$40.94
9206770017	10016 ESPERANZA CIR. # 1	06/29/18	1	\$46.53
9206770037	10016 ESPERANZA CIR. # 3	06/29/18	1	\$52.12
9206770049	10016 ESPERANZA CIR. # 4	06/29/18	1	\$35.35
9206770224	10016 ESPERANZA CIR. # 2	06/29/18	1	\$29.76
9206800016	10035 ESPERANZA CIR. # 1	06/29/18	1	\$40.94
9206800026	10035 ESPERANZA CIR. # 2	06/29/18	1	\$35.35
9206800044	10035 ESPERANZA CIR. # 4	06/29/18	1	\$35.35
9206800304	10035 ESPERANZA CIR. # 3	06/29/18	1	\$52.12
9206880014	10022 ESPERANZA CIR. # 1	06/29/18	1	\$52.12
9206880038	10022 ESPERANZA CIR. # 3	06/29/18	1	\$40.94
9206880201	10022 ESPERANZA CIR. # 2	06/29/18	1	\$40.94
9206880403	10022 ESPERANZA CIR. # 4	06/29/18	1	\$57.71
9206900045	10029 ESPERANZA CIR. # 4	06/29/18	1	\$46.53
9206900103	10029 ESPERANZA CIR. # 1	06/29/18	1	\$35.35
9206900208	10029 ESPERANZA CIR. # 2	06/29/18	1	\$85.66
9206900301	10029 ESPERANZA CIR. # 3	06/29/18	1	\$35.35
9206990017	10040 ESPERANZA CIR. # 1	06/29/18	1	\$35.35
9206990034	10040 ESPERANZA CIR. # 3	06/29/18	1	\$46.53
9206990046	10040 ESPERANZA CIR. # 4	06/29/18	1	\$35.35
9206990200	10040 ESPERANZA CIR. # 2	06/29/18	1	\$85.66
9207000012	10076 ESPERANZA CIR.	06/29/18	1	\$175.00
7010022	10072 ESPERANZA CIR.	06/29/18	1	\$35.35
71	10098 MEADOWS COURT	06/29/18	1	\$35.35
.01	10096 MEADOWS COURT	06/29/18	1	\$0.
J213	10094 MEADOWS COURT	06/06/18	1	\$0.



Whispering Pines L.S.

Trace
Neander
S.



CITY OF FELLSMERE

7/11/2018 1:11pm

Monthly Billing Service Recap

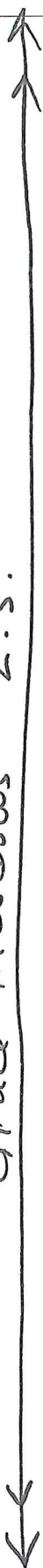
Page 3

from 6/1/2018 to 6/30/2018

EXHIBIT "A" cont.

Service		Count of Services	Consumption	Charges
9208100214	10094 MEADOWS COURT	06/29/18	1	\$52.12
9208100312	10092 MEADOWS COURT	06/29/18	1	\$46.53
9208100412	10090 MEADOWS COURT	06/29/18	1	\$57.71
9208100512	10088 MEADOWS COURT	06/29/18	1	\$63.30
9208100611	10086 MEADOWS COURT	06/29/18	1	\$24.17
9208100712	10084 MEADOWS COURT	06/29/18	1	\$40.94
9208100812	10082 MEADOWS COURT	06/29/18	1	\$40.94
9208100912	10080 MEADOWS COURT	06/29/18	1	\$68.89
9208101012	10078 MEADOWS COURT	06/29/18	1	\$46.53
9208101113	10076 MEADOWS COURT	06/29/18	1	\$52.12
9208101212	10074 MEADOWS COURT	06/29/18	1	\$85.66
9208101311	10073 GRACE AVE.	06/29/18	1	\$24.17
9208101900	10061 GRACE AVE	06/29/18	1	\$24.17
9208102012	10059 GRACE AVENUE	06/29/18	1	\$68.89
9208112101	10057 GRACE AVE	06/29/18	1	\$40.94
9208112201	10055 GRACE AVE	06/29/18	1	\$29.76
9208112301	10053 GRACE AVE	06/29/18	1	\$40.94
9208112401	10051 GRACE AVE	06/29/18	1	\$46.53
9208112501	10049 GRACE AVE	06/29/18	1	\$40.94
9208112601	10047 Grace Ave.	06/29/18	1	\$52.12
9208112701	10045 GRACE AVE	06/29/18	1	\$24.17
9208112801	10043 GRACE AVE.	06/29/18	1	\$40.94
9208112901	10041 GRACE AVENUE	06/29/18	1	\$35.35
9208113001	10039 GRACE AVE	06/29/18	1	\$29.76
9208113101	10046 GRACE AVENUE	06/29/18	1	\$35.35
9208113111	10037 GRACE AVE.	06/29/18	1	\$40.94
9208113201	10042 GRACE AVE	06/29/18	1	\$40.94
9208113301	10044 GRACE AVE	06/29/18	1	\$46.53
9208120112	10097 MEADOWS COURT	06/29/18	1	\$63.30
9208120201	10095 MEADOWS COURT	06/29/18	1	\$57.71
9208120311	10093 MEADOWS COURT	06/29/18	1	\$46.53
9208120413	10091 MEADOWS COURT	06/29/18	1	\$40.94
9208130011	10092 GRACE AVE.	06/29/18	1	\$29.76
9208130111	10094 GRACE AVE.	06/29/18	1	\$57.71
9208130211	10096 GRACE AVE.	06/29/18	1	\$57.71
9208130312	10098 GRACE AVE.	06/29/18	1	\$46.53
9208140011	10075 GRACE AVE.	06/29/18	1	\$63.30
9208140111	10077 GRACE AVE.	06/29/18	1	\$40.94
9208140211	10079 GRACE AVE.	06/29/18	1	\$46.53
9208140311	10081 GRACE AVE.	06/29/18	1	\$57.71
9208140411	10083 GRACE AVE.	06/29/18	1	\$52.12
9208140515	10085 GRACE AVE.	06/29/18	1	\$46.53
9208140602	10087 GRACE AVENUE	06/29/18	1	\$46.53
9208140701	10089 GRACE AVENUE	06/29/18	1	\$52.12
9208140801	10091 GRACE AVENUE	06/29/18	1	\$63.30
9208140901	10093 GRACE AVENUE	06/29/18	1	\$29.76
9208141001	10095 GRACE AVENUE	06/29/18	1	\$57.71
9208141101	10097 GRACE AVE.	06/29/18	1	\$35.35
9208141201	10099 GRACE AVE	06/29/18	1	\$91.25
9208150101	10048 GRACE AVE	06/29/18	1	\$46.53
9208150202	10050 GRACE AVE	06/29/18	1	\$29.76
9208150302	10052 GRACE AVE.	06/29/18	1	\$35.35
9208150403	10054 GRACE AVE	06/29/18	1	\$63.30
9208150501	10056 GRACE AVE	06/29/18	1	\$68.89
9208150601	10058 GRACE AVE.	06/29/18	1	\$46.53
9208150701	10060 GRACE AVE.	06/29/18	1	\$40.94
9208150801	10062 GRACE AVE.	06/29/18	1	\$52.12

Grace Meadows L.S.



CITY OF FELLSMERE
Monthly Billing Service Recap
 from 6/1/2018 to 6/30/2018

EXHIBIT "A" cont.

Service		Count of Services	Consumption	Charges
9208150901	10064 GRACE AVE	06/29/18	1	\$52.12
9208151001	10066 GRACE AVE	06/29/18	1	\$52.12
9208151101	10068 GRACE AVE	06/29/18	1	\$52.12
9208151201	10070 GRACE AVENUE	06/29/18	1	\$57.71
Wastewater Totals			561	\$23,843.97

Grace Meadows
 L.S.

Wastewater Late Charge

9202140118	4 S Bay Street	06/28/18		\$2.00
9203352910	62 N Broadway	06/28/18		\$2.00
9203354418	32 N Broadway	06/28/18		\$2.00
9205002000	11010 CR 512	06/28/18		\$2.00
9205002521	12285 CR 512	06/28/18		\$2.00
9205003000	11020 CR 512	06/28/18		\$2.00
9205004000	11030 CR 512	06/28/18		\$2.00
9205005003	11040 CR 512	06/28/18		\$2.00
9205006000	11050 CR 512	06/28/18		\$2.00
9206100403	10077 ESPERANZA CIR # 4	06/28/18		\$2.00
9206110046	10023 ESPERANZA CIR. # 4	06/28/18		\$2.00
9206110101	10023 ESPERANZA CIR. # 1	06/28/18		\$2.00
9206110203	10023 ESPERANZA CIR. # 2	06/28/18		\$2.00
9206111019	10046 ESPERANZA CIR. # 1	06/28/18		\$2.00
9206111202	10046 ESPERANZA CIR. # 2	06/28/18		\$2.00
9206200402	10071 ESPERANZA CIR. # 4	06/28/18		\$2.00
9206220018	10017 ESPERANZA CIR. # 1	06/28/18		\$2.00
9206300104	10065 ESPERANZA CIR # 1	06/28/18		\$2.00
9206300202	10065 ESPERANZA CIR. # 2	06/28/18		\$2.00
9206400027	10059 ESPERANZA CIR. # 2	06/28/18		\$2.00
9206440016	10005 ESPERANZA CIR. # 1	06/28/18		\$2.00
9206440048	10005 ESPERANZA CIR. # 4	06/28/18		\$2.00
9206440302	10005 ESPERANZA CIR. # 3	06/28/18		\$2.00
9206500017	10053 ESPERANZA CIR. # 1	06/28/18		\$2.00
9206500206	10053 ESPERANZA CIR. # 2	06/28/18		\$2.00
9206500314	10053 ESPERANZA CIR. # 3	06/28/18		\$2.00
9206500341	10004 ESPERANZA CIR. # 3	06/28/18		\$2.00
9206550019	10004 ESPERANZA CIR. # 1	06/28/18		\$2.00
9206550200	10004 ESPERANZA CIR. # 2	06/28/18		\$2.00
9206600029	10047 ESPERANZA CIR # 2	06/28/18		\$2.00
9206660204	10010 ESPERANZA CIR. # 2	06/28/18		\$2.00
9206660304	10010 ESPERANZA CIR. # 3	06/28/18		\$2.00
9206660400	10010 ESPERANZA CIR. # 4	06/28/18		\$2.00
9206800016	10035 ESPERANZA CIR. # 1	06/28/18		\$2.00
9206800044	10035 ESPERANZA CIR. # 4	06/28/18		\$2.00
9206900045	10029 ESPERANZA CIR. # 4	06/28/18		\$2.00
9206990017	10040 ESPERANZA CIR. # 1	06/28/18		\$2.00
9206990034	10040 ESPERANZA CIR. # 3	06/28/18		\$2.00
9206990046	10040 ESPERANZA CIR. # 4	06/28/18		\$2.00
9206990200	10040 ESPERANZA CIR. # 2	06/28/18		\$2.00
9208100312	10092 MEADOWS COURT	06/28/18		\$2.00
9208100512	10088 MEADOWS COURT	06/28/18		\$2.00
9208100812	10082 MEADOWS COURT	06/28/18		\$2.00
9208112101	10057 GRACE AVE	06/28/18		\$2.00
9208112801	10043 GRACE AVE.	06/28/18		\$2.00
9208113001	10039 GRACE AVE	06/28/18		\$2.00
9208113111	10037 GRACE AVE.	06/28/18		\$2.00
9208113201	10042 GRACE AVE	06/28/18		\$2.00
9208120112	10097 MEADOWS COURT	06/28/18		\$2.00
9208120311	10093 MEADOWS COURT	06/28/18		\$2.00



CITY OF FELLSMERE

Monthly Billing Service Recap

from 6/1/2018 to 6/30/2018

EXHIBIT "A" Cont.

7/11/2018 1:14pm

Service		Count of Services	Consumption	Charges
9208120413	10091 MEADOWS COURT	06/28/18		\$2.00
9208130011	10092 GRACE AVE.	06/28/18		\$2.00
9208140211	10079 GRACE AVE.	06/28/18		\$2.00
9208140701	10089 GRACE AVENUE	06/28/18		\$2.00
9208140801	10091 GRACE AVENUE	06/28/18		\$2.00
9208141201	10099 GRACE AVE	06/28/18		\$2.00
9208150202	10050 GRACE AVE	06/28/18		\$2.00
9208150302	10052 GRACE AVE.	06/28/18		\$2.00
9208150801	10062 GRACE AVE.	06/28/18		\$2.00
9208151101	10068 GRACE AVE	06/28/18		\$2.00
Wastewater Late Charge Totals				\$120.00
Totals		561		\$23,963.97



- A - 6. S. Oak - private L.S. for single user EXHIBIT "A" cont.
- B - 130 N. Broadway - private L.S. for single user
- C - 107 N Broadway - gravity to Fellsmere Inn L.S.
- D - 12798 + 12820 CR512 - private L.S. serving two adjoining properties
- E - 12896 CR512 - ^{City} ~~private~~ L.S. for single user
Guadalupe Church
- F - Fellsmere Elementary - private L.S. also serves
50 N. Cypress
Marian Fell Library (63 N. Cypress)
- G - various Aldea Properties - private L.S.
- H - 11200 CR512 - The Preserve - Carter designed
- I - 12740 CR512 - Dollar General - Private L.S.
- J - 12285 CR512 - OP. Hope - Private L.S. [No Data]
- K - 11 N. Willow [Now 19 N. Willow] - Private L.S. (single user)
- L - 12196 CR512 - TCCH - Private L.S. single user
- M - 5 S. Elm - Laundromat - Private L.S. single user
- N - 37 S. Willow - Dance Hall - Private L.S. single user
- O - gravity connections to Broadway eDBG Gravity Line
- P - 133 N. Broadway [No Data] believe it is gravity connected to gravity line north of Fellsmere Inn L.S.
- Q - 106 N. Broadway - Cash Grocery - Private L.S. Single users
- R - 2 S. Pine - Garcia's Bakery - Private L.S. Single User
- S - [No data] comm. center + fire station
- T - 4 S Bay - Guisepes - Private L.S. single user

EXHIBIT 'B' PS-1 EXISTING CONNECTIONS

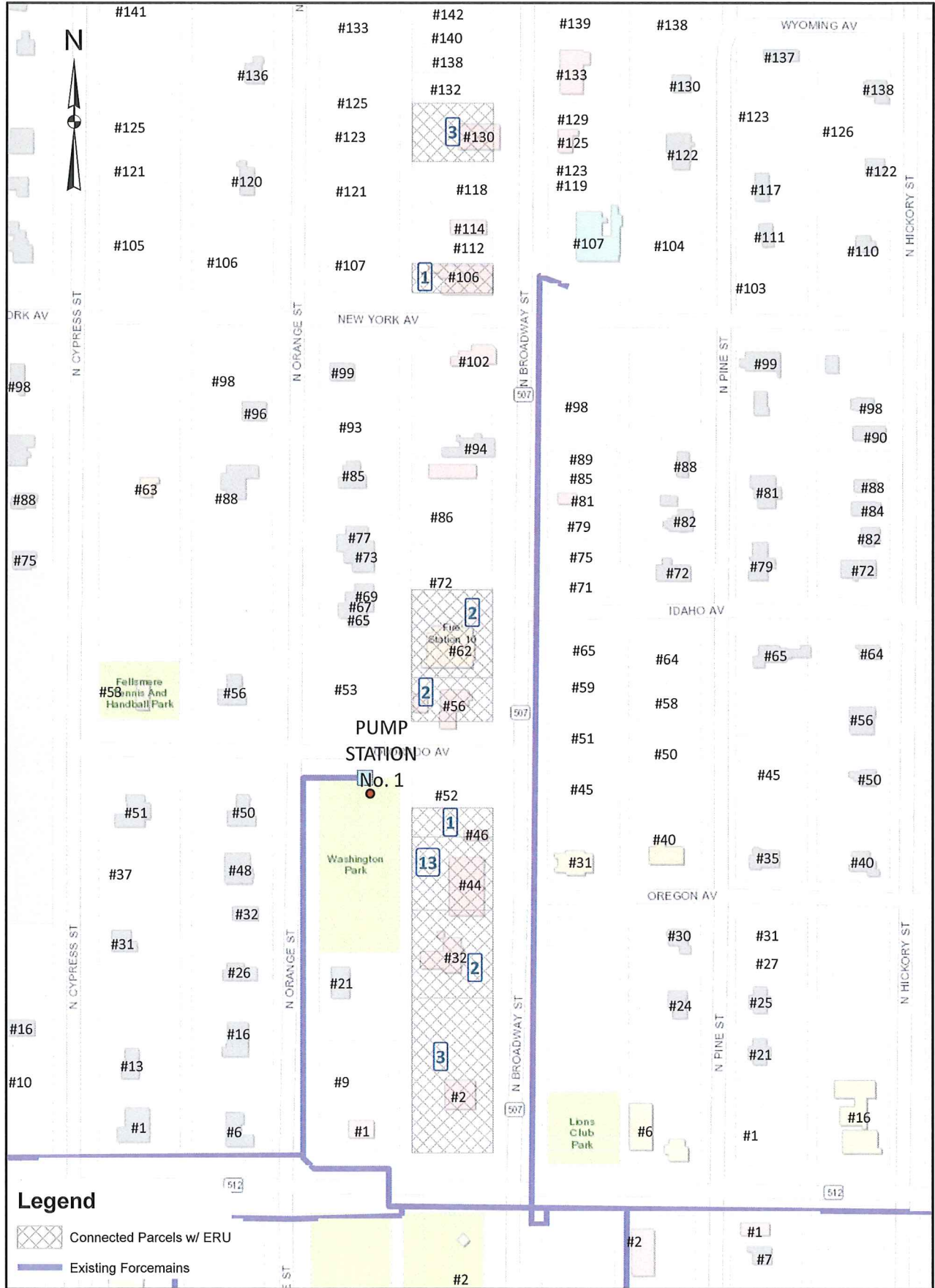
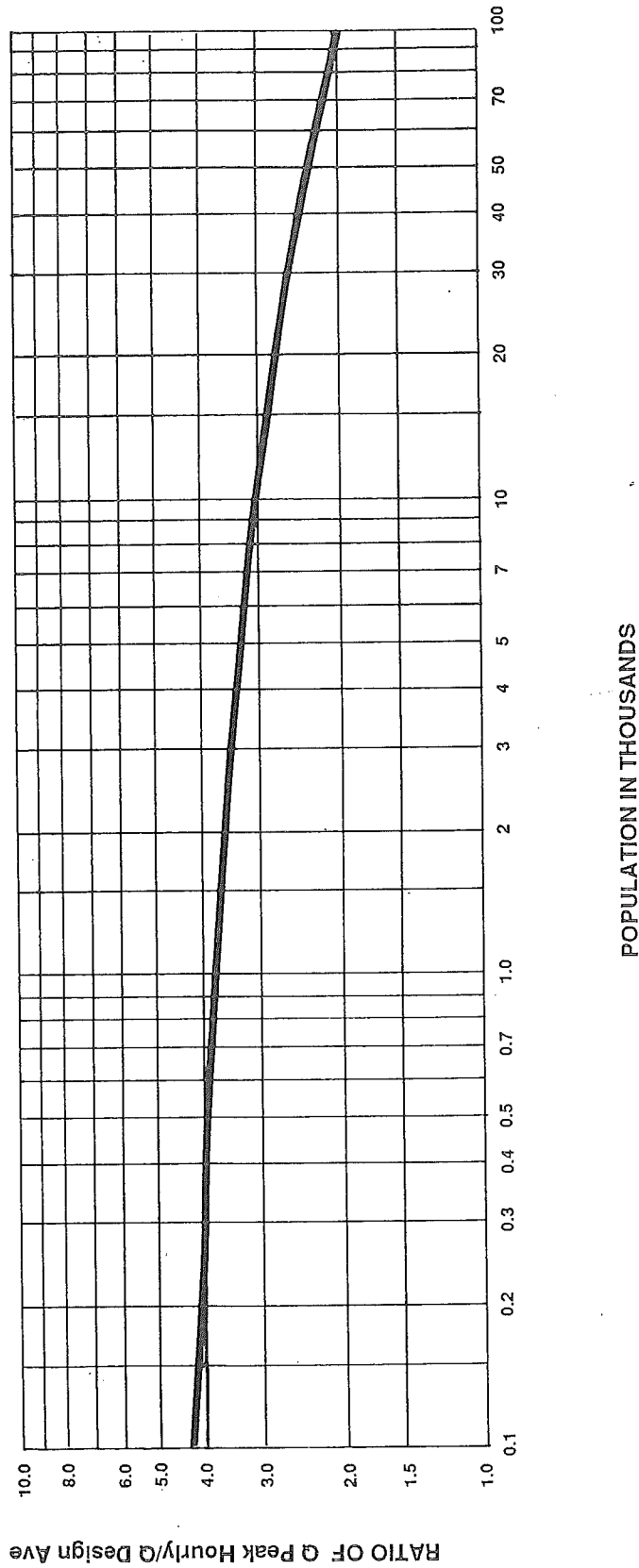


EXHIBIT C

FIGURE 1.
RATIO OF PEAK HOURLY FLOW TO DESIGN AVERAGE FLOW



Q peak hourly: Maximum Rate of Wastewater Flow (Peak Hourly Flow)

Q design ave: Design Average Daily Wastewater Flow

Source: $Q \text{ Peak Hourly}/Q \text{ Design Ave} = \frac{18 + \sqrt{P}}{4 + \sqrt{P}}$ --- (P = population in thousands)

Fair, G.M. and Geyer, J.C. "Water Supply and Waste-water Disposal" 1st Ed., John Wiley & Sons, Inc., New York (1954), p. 136

LS1



Pump performance curves
AFP 1046 60 Hz

Curve number

Reference curve
AFP 1046

FELLSMERE - CDBG WWTS, PS #1

Discharge
DN100

Frequency
60 Hz

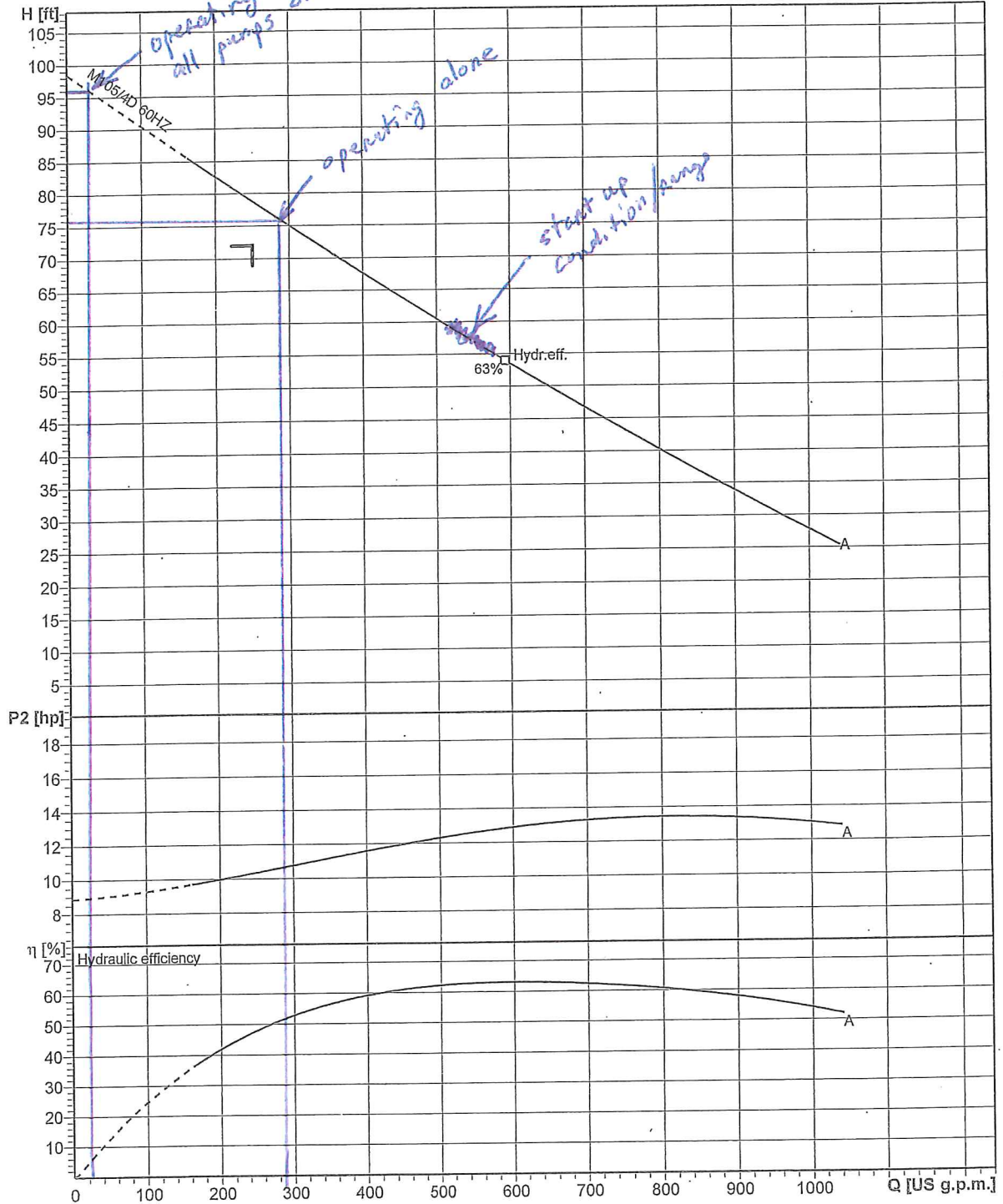
Density
62.43 lb/ft³

Viscosity
0.0000169 ft²/s

Testnorm
Hydraulic Institute

Rated speed
1705 rpm

Date
2001-01-09



Impeller size
9.92 inch

N° of vanes

Impeller
ContraBlock impeller, 1 vane

Solid size
3 1/8"

Revision 2000-07-06



North County Recycling Site Sketch

Site Area:	78.77 ac.
Proposed Use:	Mixed-use
Existing Use:	Vacant
Non-Residential Flex Space:	96,000sf
Non-Residential Site Area	7.75 ac.
Residential	331 units
Residential Site Area	71.02 ac.
Single Family	153 units
60'x120'	
Townhomes	160 units
25'x90'	
Lake Area	12.94 ac.
Lake Area Dedication	5.00 ac.
Recreation Area	
TH Clubhouse/Pool	0.50 ac.
SF Clubhouse/Pool	0.58 ac.

APPENDIX “A”

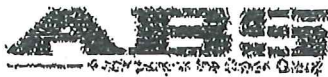
HYDRAULIC MODEL RESULTS
SUMMARY
and
MODEL OUTPUT

City of Fellsmere Pressurized Sanitary Transmission System

PUMP STATION SUMMARY					
P.S. No.	Pump Station Name	Ownership	Pump Info	Pump Station Operating Conditions	
				Station Operating Alone	All Stations Operating
1	Downtown Repump	Public	ABS AFP 1046 M105/4D IMPELLER	284 gpm @ 33 psi	22 gpm @ 41.7 psi
2	Bruno's Restaurant	Private	ABS PIRANHA GRINDER S30-2	72 gpm @ 10.4 psi	48 gpm @ 39 psi
3 *	Fellsmere Repump	Public	-	599 gpm	599 gpm
4	Sonrise Villas	Private	ABS AFP 1047 M185/4G IMPELLER	250 gpm @ 43.8 psi	107 gpm @ 47.5 psi
5	Whispering Pines	Private	ABS AFP 0844 - M100/2D Impeller	150 gpm @ 43.5 psi	44 gpm @ 58.7 psi
6	Gieuseppe's Pizzeria	Private	ABS PIRANHA GRINDER S16/2W	44 gpm @ 5.2 psi	9 gpm @ 37.1 psi
7	Hampton Inc.	Private	ABS PIRNHA GRINDER S18/2W	46 gpm @ 10.7 psi	21 gpm @ 39.7 psi
8	Our Lady of Guadalupe Church	Private	ABS PIRANHA GRINDER S16/2W	44 gpm @ 5.1 psi	12 gpm @ 35.8 psi
9	Project Hope	Private	ABS PIRANHA GRINDER S16/2W	41 gpm @ 15.3 psi	26 gpm @ 31.3 psi
10	Fellsmere Medical Center	Private	ABS PIRANHA GRINDER S16/2W	46 gpm @ 3.2 psi	35 gpm @ 25.3 psi
11	Charter School	Private	ABS PIRANHA GRINDER S16/2W	44 gpm @ 5.2 psi	10 gpm @ 36.7 psi
12	Willow Lakes (Approved)	Public	ABS AFP 1049 M105/4 IMPELLER	266 gpm @ 38.4 psi	95 gpm @ 45.7 psi
13	Grace Meadows		ABS Piranha Grinder M80/2	106 gpm @ 46.5 psi	63 gpm @ 66.8 psi
14	Fellsmere Old School	Public	ABS Piranha Grinder M25/2D	72 gpm @ 7 psi	9 gpm @ 39.9 psi
15	Fellsmere Inn	Private	ABS Piranha Trim S26/2WEX	55 gpm @ 16.8 psi	9 gpm @ 42.5 psi
16	Garcia Bakery	Private	ABS S20/2D 2011 Model	47 gpm @ 10.7 psi	9 gpm @ 37.7 psi
17	Fellsmere Elementary SAchool	Public	FLYGT NP3102-181 SH 2008-11-03	197 gpm @ 25.8 psi	42 gpm @ 39 psi
18	Dollar General	Private	HOMA GRP24/3/C	48 gpm @ 4.5 psi	30 gpm @ 32.3 psi

* Fellsmere Repump station flow based on start-up report. (See next page)

L53



ABS Plumps Inc.
 575 Marquette Drive
 Grapeland, Texas 75741
 Phone: 409-333-4455
 Fax: 409-333-4434

PRODUCT START-UP REPORT

Customer: MAXWELL CONTRACTING
 Engineer: Hartman + Assoc.
 Job Site: Fallsmere, L.S.#3
 Model No: Z6104 CI
 Pump Size: 101/119011
101/119012

Size: CI Voltage: 230/3P
 Design Capacity: 320@88 F.L.A. 67.0
 Date of Start-Up: 11/9/01 Date Shipped: 10/12/01
 S.S. No.: 45767

1. General condition of pump at start-up: New
 Pump was started Manual/Remote Control
 Were pump tests and/or quality preserved? Yes No
 2. Check for correct pump rotation: Correct Reverse
 Upper guide is properly high (within tolerance) Yes No
 Lower guide is properly low (within tolerance) Yes No
 Guide rail surface is properly finished Yes No

3. Check for correct pump rotation

Direction	1st	2nd	3rd	4th	5th
Rotation	✓	✓	✓	✓	✓
Speed	2111	61011			
Temp	91.7	91.7			
Clearance	115"	115"			
Time	30:30	1:20			
Flow Rate	599 GPM	599 GPM			
Dist. Pressure					
Leakage Rate					
Notes	76"	76"			

3. Control Panel
 Name of controller at start-up: New
 Manufacturer: PCP
 Manufacturer Code: 10479

4. Check for correct rotation

Direction	1st	2nd	3rd	4th	5th
Rotation	57	57			
Speed	57	57			
Temp	57	57			
Clearance	57	57			
Time					
Flow Rate					
Dist. Pressure					
Leakage Rate					
Notes					

4. Voltage Checks
 A. Incoming Line to Line
 L1 x 2: 208
 L2 x 3: 233
 L3 x 2: 238

5. NOTES:

B. Line to Ground
 L1 to G: 120
 L2 to G: 208
 L3 to G: 120

6. Voltage on Control Circuit
120
 7. Voltage on Motor Control Circuit
CB 120

8. Check for correct pump rotation
 Rotation is correct
 Upper guide is properly high (within tolerance)
 Lower guide is properly low (within tolerance)
 Guide rail surface is properly finished
 Name of controller at start-up is correct

9. Check for correct pump rotation
 The equipment was tested to operate and to verify the parameters specified.
 Started by: John Scott Date: 11/9/01
 Customer Rep. by: Neal Cox Date: 11/9/01



Pump performance curves Z6104C1

Curvenumber
40016194-1

Referencecurve
6194-1

PUMPSTATION#3

Discharge
DN150/100

Frequency
60Hz

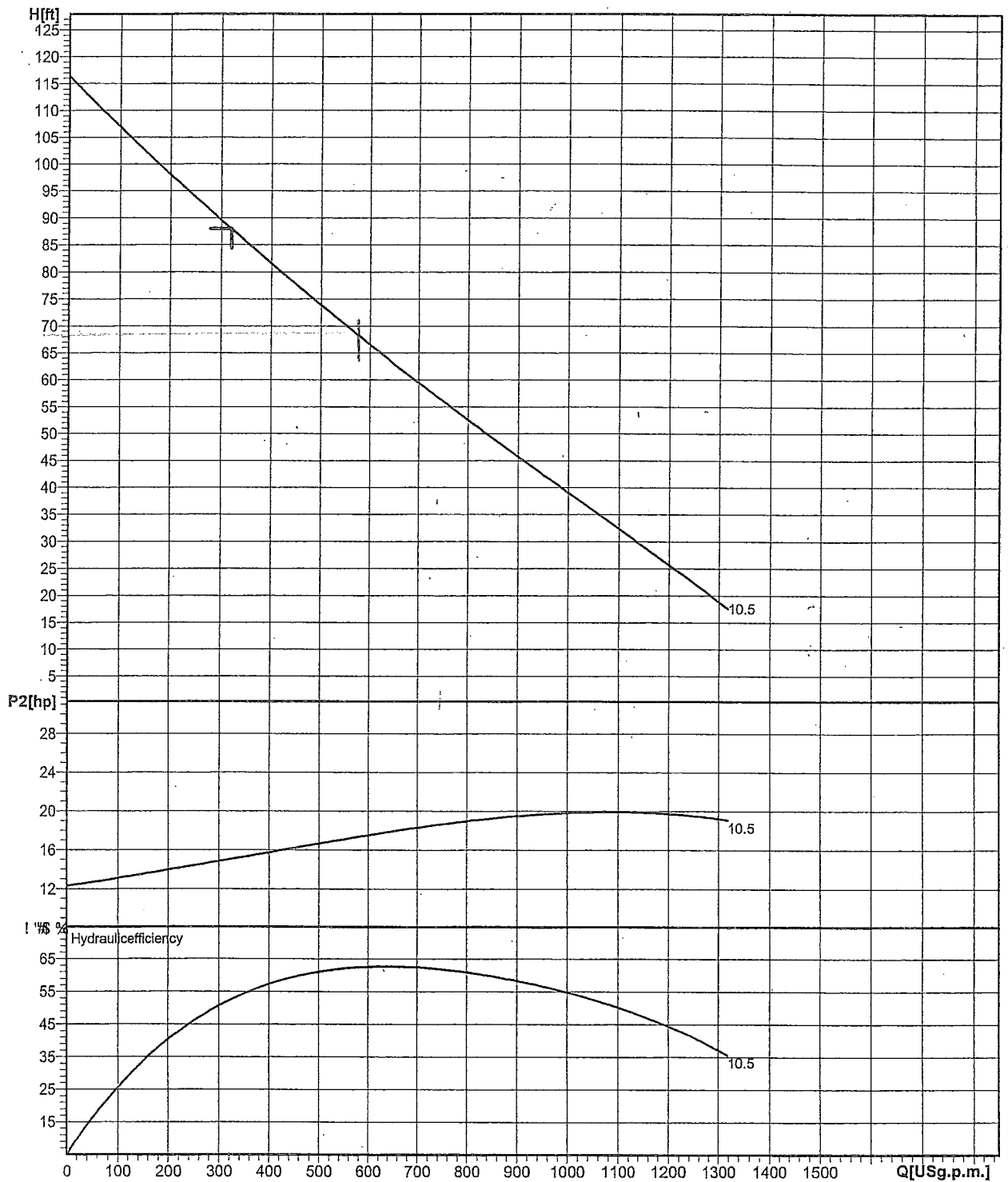
Density
62.43lb/ft³

Viscosity
0.0000169ft²/s

Testnorm
HydraulicInstitute

Ratedspeed
1775rpm

Date
2001-04-16



Impellersize
10.5inch

N° of vanes

Impeller
1-vanechannelimpeller

Z8H-595 Solidsize
31/8"

Revision
Z6104C1

1999-03-02

ABS reserves the right to change any data and dimensions without prior notice and cannot be held responsible for the use of information contained in this software.

ABSELPRO1.4/2000-12-06

City of Fellsmere Pressurized Sanitary Transmission System

Link ID	Start Node	End Node	Length	Diameter
P-172	172	180	2936'	8"
P-100	100	105	670'	6"
P-2	2	160	270'	3"
P-1	1	100	760'	6"
PS-2-EQLOSS	PS-2	2	100'	2"
PS-1-EQLOSS	PS-1	1	100'	4"
PS-4-EQLOSS	PS-4	4	100'	4"
P-160	160	170	30'	8"
P-4	4	220	1392'	4"
P-5	290	280	1200'	4"
PS-5-EQLOSS	PS-5	290	100'	3"
P-280	280	220	3391'	4"
P-220	220	210	830'	6"
P-210	210	200	1240'	6"
P-200	200	170	73'	6"
P-6	6	110	120'	2"
PS-6-EQLOSS	PS-6	6	100'	2"
PS-7-EQLOSS	PS-7	7	100'	2"
P-7	7	120	305'	2"
PS-8-EQLOSS	PS-8	8	100'	2"
P-8	8	150	85'	2"
PS-9-EQLOSS	PS-9	9	100'	2"
P-9	9	180	684'	2"
PS-12-EQLOSS	PS-12	12	100'	4"
P-12	12	370	185'	6"
P-370	370	350	2631'	6"
P-350	350	130	3656'	6"
P-110	110	120	595'	6"
P-120	120	130	1166'	6"
P-130	130	140	158'	6"
P-140	140	150	485'	6"
P-150	150	160	580'	6"
P-180	180	185	496'	8"
P-185	185	PS-3-WW	7744'	8"
PS-10-EQLOSS	PS-10	10	100'	2.5"
P-10	10	185	180'	2.5"
PS-11-EQLOSS	PS-11	11	100'	2"
P-11	11	140	85'	2"
P-400	400	290	655'	4"
P-410	410	400	145'	3"
P-420	420	410	211'	3"
P-430	430	420	634'	3"
P-440	440	430	320'	3"
P-13	13	440	40'	3"
P-450	450	400	171'	4"

City of Fellsmere Pressurized Sanitary Transmission System

Link ID	Start Node	End Node	Length	Diameter
P-13-EQLOSS	PS-13	13	100'	3"
P-500	500	100	35'	4"
P-510	510	500	272'	4"
P-14	14	510	206'	2"
PS-14-EQLOSS	PS-14	14	100'	2"
P-105	105	107	155'	6"
PS-15-EQLOSS	PS-15	15	100'	2"
P-15	15	600	8'	3"
P-600	600	105	1747'	3"
PS-16-EQLOSS	PS-16	16	100'	2"
P-16	16	107	320'	2"
P-17	17	100	1015'	4"
PS-17-EQLOSS	PS-17	17	100'	4"
PS-18-EQLOSS	PS-18	18	100'	2"
P-18	18	172	150'	2"
P-170	170	172	690'	8"
P-107	107	110	1020'	6"
PS#2	PS-2-WW	PS-2	Pump	
PS#1	PS-1-WW	PS-1	Pump	
PS#4	PS-4-WW	PS-4	Pump	
PS#5	PS-5-WW	PS-5	Pump	
PS#6	PS-6-WW	PS-6	Pump	
PS#7	PS-7-WW	PS-7	Pump	
PS#8	PS-8-WW	PS-8	Pump	
PS#9	PS-9-WW	PS-9	Pump	
PS#12	PS-12-WW	PS-12	Pump	
PS#10	PS-10-WW	PS-10	Pump	
PS#11	PS-11-WW	PS-11	Pump	
PS#13	PS-13-WW	PS-13	Pump	
PS#14	PS-14-WW	PS-14	Pump	
PS#15	PS-15-WW	PS-15	Pump	
PS#16	PS-16-WW	PS-16	Pump	
PS#17	PS-17-WW	PS-17	Pump	
PS#18	PS-18-WW	PS-18	Pump	

City of Fellsmere Pressurized Sanitary Transmission System
Pump Station 1 Pumping Alone

Node ID	Demand	Pressure	
	GPM	psi	ft
Junc 1	0	26.78	61.86
Junc 10	0	6.81	15.73
Junc 100	0	24.41	56.39
Junc 105	0	22.54	52.07
Junc 107	0	22.49	51.95
Junc 11	0	13.32	30.77
Junc 110	0	19.31	44.61
Junc 12	0	17.28	39.92
Junc 120	0	17.45	40.31
Junc 13	0	8.16	18.85
Junc 130	0	13.82	31.92
Junc 14	0	23.44	54.15
Junc 140	0	13.32	30.77
Junc 15	0	22.32	51.56
Junc 150	0	11.81	27.28
Junc 16	0	21.62	49.94
Junc 160	0	8.92	20.61
Junc 17	0	25.06	57.89
Junc 170	0	9.98	23.05
Junc 172	0	9.45	21.83
Junc 18	0	9.45	21.83
Junc 180	0	7.2	16.63
Junc 185	0	6.81	15.73
Junc 2	0	8.92	20.61
Junc 200	0	9.98	23.05
Junc 210	0	9.98	23.05
Junc 220	0	9.98	23.05
Junc 280	0	9.98	23.05
Junc 290	0	9.98	23.05
Junc 350	0	13.82	31.92
Junc 370	0	13.82	31.92
Junc 4	0	9.98	23.05
Junc 400	0	8.38	19.36
Junc 410	0	7.81	18.04
Junc 420	0	7.55	17.44
Junc 430	0	7.77	17.95
Junc 440	0	7.73	17.86
Junc 450	0	7.64	17.65
Junc 500	0	23.44	54.15
Junc 510	0	23.44	54.15
Junc 6	0	18.44	42.60
Junc 600	0	22.54	52.07
Junc 7	0	17.45	40.31
Junc 8	0	11.81	27.28

City of Fellsmere Pressurized Sanitary Transmission System
Pump Station 1 Pumping Alone

Node ID	Demand		Pressure	
	GPM	psi	ft	
Junc 9	0	7.2	16.63	
Junc PS-1	0	33.06	76.37	
Junc PS-10	0	6.81	15.73	
Junc PS-11	0	13.32	30.77	
Junc PS-12	0	19.88	45.92	
Junc PS-13	0	12.49	28.85	
Junc PS-14	0	26.28	60.71	
Junc PS-15	0	27	62.37	
Junc PS-16	0	21.62	49.94	
Junc PS-17	0	25.06	57.89	
Junc PS-18	0	6.63	15.32	
Junc PS-2	0	11.61	26.82	
Junc PS-4	0	13.88	32.06	
Junc PS-5	0	13.23	30.56	
Junc PS-6	0	18.44	42.60	
Junc PS-7	0	17.45	40.31	
Junc PS-8	0	11.81	27.28	
Junc PS-9	0	7.2	16.63	
Resvr PS-10-WW	0	0	0.00	
Resvr PS-11-WW	0	0	0.00	
Resvr PS-12-WW	0	0	0.00	
Resvr PS-13-WW	0	0	0.00	
Resvr PS-14-WW	0	0	0.00	
Resvr PS-15-WW	0	0	0.00	
Resvr PS-16-WW	0	0	0.00	
Resvr PS-17-WW	0	0	0.00	
Resvr PS-18-WW	0	0	0.00	
Resvr PS-1-WW	-283.79	0	0.00	
Resvr PS-2-WW	0	0	0.00	
Resvr PS-3-WW	283.78	0	0.00	
Resvr PS-4-WW	0	0	0.00	
Resvr PS-5-WW	0	0	0.00	
Resvr PS-6-WW	0	0	0.00	
Resvr PS-7-WW	0	0	0.00	
Resvr PS-8-WW	0	0	0.00	
Resvr PS-9-WW	0	0	0.00	

City of Fellsmere Pressurized Sanitary Transmission System
Pump Station 2 Pumping Alone

Node ID	Demand	Pressure	
	GPM	psi	ft
Junc 1	0	0.94	2.17
Junc 10	0	1.34	3.10
Junc 100	0	0.94	2.17
Junc 105	0	1.16	2.68
Junc 107	0	1.59	3.67
Junc 11	0	1.59	3.67
Junc 110	0	1.59	3.67
Junc 12	0	5.06	11.69
Junc 120	0	1.59	3.67
Junc 13	0	-0.23	-0.53
Junc 130	0	1.59	3.67
Junc 14	0	-0.03	-0.07
Junc 140	0	1.59	3.67
Junc 15	0	0.94	2.17
Junc 150	0	1.59	3.67
Junc 16	0	0.72	1.66
Junc 160	0	0.51	1.18
Junc 17	0	1.59	3.67
Junc 170	0	1.59	3.67
Junc 172	0	1.55	3.58
Junc 18	0	1.55	3.58
Junc 180	0	1.37	3.16
Junc 185	0	1.34	3.10
Junc 2	0	2.46	5.68
Junc 200	0	1.59	3.67
Junc 210	0	1.59	3.67
Junc 220	0	1.59	3.67
Junc 280	0	1.59	3.67
Junc 290	0	1.59	3.67
Junc 350	0	1.59	3.67
Junc 370	0	1.59	3.67
Junc 4	0	1.59	3.67
Junc 400	0	-0.01	-0.02
Junc 410	0	-0.58	-1.34
Junc 420	0	-0.84	-1.94
Junc 430	0	-0.62	-1.43
Junc 440	0	-0.66	-1.52
Junc 450	0	-0.75	-1.73
Junc 500	0	-0.03	-0.07
Junc 510	0	-0.03	-0.07
Junc 6	0	0.72	1.66
Junc 600	0	1.16	2.68
Junc 7	0	1.59	3.67
Junc 8	0	1.59	3.67

City of Fellsmere Pressurized Sanitary Transmission System
Pump Station 2 Pumping Alone

Node ID	Demand	Pressure	
	GPM	psi	ft
Junc 9	0	1.37	3.16
Junc PS-1	0	4.97	11.48
Junc PS-10	0	1.34	3.10
Junc PS-11	0	1.59	3.67
Junc PS-12	0	7.66	17.69
Junc PS-13	0	4.1	9.47
Junc PS-14	0	2.8	6.47
Junc PS-15	0	5.62	12.98
Junc PS-16	0	0.72	1.66
Junc PS-17	0	1.59	3.67
Junc PS-18	0	-1.27	-2.93
Junc PS-2	0	10.35	23.91
Junc PS-4	0	5.49	12.68
Junc PS-5	0	4.84	11.18
Junc PS-6	0	0.72	1.66
Junc PS-7	0	1.59	3.67
Junc PS-8	0	1.59	3.67
Junc PS-9	0	1.37	3.16
Resvr PS-10-WW	0	0	0.00
Resvr PS-11-WW	0	0	0.00
Resvr PS-12-WW	0	0	0.00
Resvr PS-13-WW	0	0	0.00
Resvr PS-14-WW	0	0	0.00
Resvr PS-15-WW	0	0	0.00
Resvr PS-16-WW	0	0	0.00
Resvr PS-17-WW	0	0	0.00
Resvr PS-18-WW	0	0	0.00
Resvr PS-1-WW	0	0	0.00
Resvr PS-2-WW	-72.17	0	0.00
Resvr PS-3-WW	72.17	0	0.00
Resvr PS-4-WW	0	0	0.00
Resvr PS-5-WW	0	0	0.00
Resvr PS-6-WW	0	0	0.00
Resvr PS-7-WW	0	0	0.00
Resvr PS-8-WW	0	0	0.00
Resvr PS-9-WW	0	0	0.00

City of Fellsmere Pressurized Sanitary Transmission System
Pump Station 4 Pumping Alone

Node ID	Demand	Pressure	
	GPM	psi	ft
Junc 1	0	7.42	17.14
Junc 10	0	5.57	12.87
Junc 100	0	7.42	17.14
Junc 105	0	7.64	17.65
Junc 107	0	8.07	18.64
Junc 11	0	8.07	18.64
Junc 110	0	8.07	18.64
Junc 12	0	11.54	26.66
Junc 120	0	8.07	18.64
Junc 13	0	11.53	26.63
Junc 130	0	8.07	18.64
Junc 14	0	6.45	14.90
Junc 140	0	8.07	18.64
Junc 15	0	7.42	17.14
Junc 150	0	8.07	18.64
Junc 16	0	7.2	16.63
Junc 160	0	6.99	16.15
Junc 17	0	8.07	18.64
Junc 170	0	8.07	18.64
Junc 172	0	7.65	17.67
Junc 18	0	7.65	17.67
Junc 180	0	5.87	13.56
Junc 185	0	5.57	12.87
Junc 2	0	6.99	16.15
Junc 200	0	8.25	19.06
Junc 210	0	11.31	26.13
Junc 220	0	13.35	30.84
Junc 280	0	13.35	30.84
Junc 290	0	13.35	30.84
Junc 350	0	8.07	18.64
Junc 370	0	8.07	18.64
Junc 4	0	38.09	87.99
Junc 400	0	11.75	27.14
Junc 410	0	11.19	25.85
Junc 420	0	10.93	25.25
Junc 430	0	11.14	25.73
Junc 440	0	11.1	25.64
Junc 450	0	11.01	25.43
Junc 500	0	6.45	14.90
Junc 510	0	6.45	14.90
Junc 6	0	7.2	16.63
Junc 600	0	7.64	17.65
Junc 7	0	8.07	18.64
Junc 8	0	8.07	18.64

City of Fellsmere Pressurized Sanitary Transmission System
Pump Station 4 Pumping Alone

Node ID	Demand	Pressure	
	GPM	psi	ft
Junc 9	0	5.87	13.56
Junc PS-1	0	11.45	26.45
Junc PS-10	0	5.57	12.87
Junc PS-11	0	8.07	18.64
Junc PS-12	0	14.14	32.66
Junc PS-13	0	15.87	36.66
Junc PS-14	0	9.28	21.44
Junc PS-15	0	12.1	27.95
Junc PS-16	0	7.2	16.63
Junc PS-17	0	8.07	18.64
Junc PS-18	0	4.84	11.18
Junc PS-2	0	9.67	22.34
Junc PS-4	0	43.76	101.09
Junc PS-5	0	16.6	38.35
Junc PS-6	0	7.2	16.63
Junc PS-7	0	8.07	18.64
Junc PS-8	0	8.07	18.64
Junc PS-9	0	5.87	13.56
Resvr PS-10-WW	0	0	0.00
Resvr PS-11-WW	0	0	0.00
Resvr PS-12-WW	0	0	0.00
Resvr PS-13-WW	0	0	0.00
Resvr PS-14-WW	0	0	0.00
Resvr PS-15-WW	0	0	0.00
Resvr PS-16-WW	0	0	0.00
Resvr PS-17-WW	0	0	0.00
Resvr PS-18-WW	0	0	0.00
Resvr PS-1-WW	0	0	0.00
Resvr PS-2-WW	0	0	0.00
Resvr PS-3-WW	249.97	0	0.00
Resvr PS-4-WW	-249.97	0	0.00
Resvr PS-5-WW	0	0	0.00
Resvr PS-6-WW	0	0	0.00
Resvr PS-7-WW	0	0	0.00
Resvr PS-8-WW	0	0	0.00
Resvr PS-9-WW	0	0	0.00

City of Fellsmere Pressurized Sanitary Transmission System
Pump Station 5 Pumping Alone

Node ID	Demand	Pressure	
	GPM	psi	ft
Junc 1	0	3.02	6.98
Junc 10	0	2.7	6.24
Junc 100	0	3.02	6.98
Junc 105	0	3.24	7.48
Junc 107	0	3.67	8.48
Junc 11	0	3.67	8.48
Junc 110	0	3.67	8.48
Junc 12	0	7.14	16.49
Junc 120	0	3.67	8.48
Junc 13	0	35.65	82.35
Junc 130	0	3.67	8.48
Junc 14	0	2.05	4.74
Junc 140	0	3.67	8.48
Junc 15	0	3.02	6.98
Junc 150	0	3.67	8.48
Junc 16	0	2.8	6.47
Junc 160	0	2.59	5.98
Junc 17	0	3.67	8.48
Junc 170	0	3.67	8.48
Junc 172	0	3.51	8.11
Junc 18	0	3.51	8.11
Junc 180	0	2.81	6.49
Junc 185	0	2.7	6.24
Junc 2	0	2.59	5.98
Junc 200	0	3.74	8.64
Junc 210	0	4.93	11.39
Junc 220	0	5.73	13.24
Junc 280	0	29.17	67.38
Junc 290	0	37.47	86.56
Junc 350	0	3.67	8.48
Junc 370	0	3.67	8.48
Junc 4	0	5.73	13.24
Junc 400	0	35.87	82.86
Junc 410	0	35.3	81.54
Junc 420	0	35.04	80.94
Junc 430	0	35.26	81.45
Junc 440	0	35.22	81.36
Junc 450	0	35.13	81.15
Junc 500	0	2.05	4.74
Junc 510	0	2.05	4.74
Junc 6	0	2.8	6.47
Junc 600	0	3.24	7.48
Junc 7	0	3.67	8.48
Junc 8	0	3.67	8.48

City of Fellsmere Pressurized Sanitary Transmission System
Pump Station 5 Pumping Alone

Node ID	Demand	Pressure	
	GPM	psi	ft
Junc 9	0	2.81	6.49
Junc PS-1	0	7.05	16.29
Junc PS-10	0	2.7	6.24
Junc PS-11	0	3.67	8.48
Junc PS-12	0	9.74	22.50
Junc PS-13	0	39.98	92.35
Junc PS-14	0	4.88	11.27
Junc PS-15	0	7.7	17.79
Junc PS-16	0	2.8	6.47
Junc PS-17	0	3.67	8.48
Junc PS-18	0	0.69	1.59
Junc PS-2	0	5.27	12.17
Junc PS-4	0	9.63	22.25
Junc PS-5	0	43.53	100.55
Junc PS-6	0	2.8	6.47
Junc PS-7	0	3.67	8.48
Junc PS-8	0	3.67	8.48
Junc PS-9	0	2.81	6.49
Resvr PS-10-WW	0	0	0.00
Resvr PS-11-WW	0	0	0.00
Resvr PS-12-WW	0	0	0.00
Resvr PS-13-WW	0	0	0.00
Resvr PS-14-WW	0	0	0.00
Resvr PS-15-WW	0	0	0.00
Resvr PS-16-WW	0	0	0.00
Resvr PS-17-WW	0	0	0.00
Resvr PS-18-WW	0	0	0.00
Resvr PS-1-WW	0	0	0.00
Resvr PS-2-WW	0	0	0.00
Resvr PS-3-WW	150.17	0	0.00
Resvr PS-4-WW	0	0	0.00
Resvr PS-5-WW	-150.17	0	0.00
Resvr PS-6-WW	0	0	0.00
Resvr PS-7-WW	0	0	0.00
Resvr PS-8-WW	0	0	0.00
Resvr PS-9-WW	0	0	0.00

City of Fellsmere Pressurized Sanitary Transmission System
Pump Station 6 Pumping Alone

Node ID	Demand	Pressure	
	GPM	psi	ft
Junc 1	0	0.81	1.87
Junc 10	0	1.06	2.45
Junc 100	0	0.81	1.87
Junc 105	0	1.02	2.36
Junc 107	0	1.46	3.37
Junc 11	0	1.26	2.91
Junc 110	0	1.46	3.37
Junc 12	0	4.75	10.97
Junc 120	0	1.4	3.23
Junc 13	0	-0.66	-1.52
Junc 130	0	1.28	2.96
Junc 14	0	-0.17	-0.39
Junc 140	0	1.26	2.91
Junc 15	0	0.81	1.87
Junc 150	0	1.22	2.82
Junc 16	0	0.59	1.36
Junc 160	0	0.07	0.16
Junc 17	0	1.46	3.37
Junc 170	0	1.16	2.68
Junc 172	0	1.14	2.63
Junc 18	0	1.14	2.63
Junc 180	0	1.07	2.47
Junc 185	0	1.06	2.45
Junc 2	0	0.07	0.16
Junc 200	0	1.16	2.68
Junc 210	0	1.16	2.68
Junc 220	0	1.16	2.68
Junc 280	0	1.16	2.68
Junc 290	0	1.16	2.68
Junc 350	0	1.28	2.96
Junc 370	0	1.28	2.96
Junc 4	0	1.16	2.68
Junc 400	0	-0.45	-1.04
Junc 410	0	-1.01	-2.33
Junc 420	0	-1.27	-2.93
Junc 430	0	-1.05	-2.43
Junc 440	0	-1.1	-2.54
Junc 450	0	-1.18	-2.73
Junc 500	0	-0.17	-0.39
Junc 510	0	-0.17	-0.39
Junc 6	0	3.11	7.18
Junc 600	0	1.02	2.36
Junc 7	0	1.4	3.23
Junc 8	0	1.22	2.82

City of Fellsmere Pressurized Sanitary Transmission System
Pump Station 6 Pumping Alone

Node ID	Demand	Pressure	
	GPM	psi	ft
Junc 9	0	1.07	2.47
Junc PS-1	0	4.83	11.16
Junc PS-10	0	1.06	2.45
Junc PS-11	0	1.26	2.91
Junc PS-12	0	7.35	16.98
Junc PS-13	0	3.67	8.48
Junc PS-14	0	2.67	6.17
Junc PS-15	0	5.48	12.66
Junc PS-16	0	0.59	1.36
Junc PS-17	0	1.46	3.37
Junc PS-18	0	-1.68	-3.88
Junc PS-2	0	2.76	6.38
Junc PS-4	0	5.06	11.69
Junc PS-5	0	4.41	10.19
Junc PS-6	0	5.2	12.01
Junc PS-7	0	1.4	3.23
Junc PS-8	0	1.22	2.82
Junc PS-9	0	1.07	2.47
Resvr PS-10-WW	0	0	0.00
Resvr PS-11-WW	0	0	0.00
Resvr PS-12-WW	0	0	0.00
Resvr PS-13-WW	0	0	0.00
Resvr PS-14-WW	0	0	0.00
Resvr PS-15-WW	0	0	0.00
Resvr PS-16-WW	0	0	0.00
Resvr PS-17-WW	0	0	0.00
Resvr PS-18-WW	0	0	0.00
Resvr PS-1-WW	0	0	0.00
Resvr PS-2-WW	0	0	0.00
Resvr PS-3-WW	44.17	0	0.00
Resvr PS-4-WW	0	0	0.00
Resvr PS-5-WW	0	0	0.00
Resvr PS-6-WW	-44.17	0	0.00
Resvr PS-7-WW	0	0	0.00
Resvr PS-8-WW	0	0	0.00
Resvr PS-9-WW	0	0	0.00

Note: Pump station is pumping beyond pump curve

City of Fellsmere Pressurized Sanitary Transmission System
Pump Station 7 Pumping Alone

Node ID	Demand	Pressure	
	GPM	psi	ft
Junc 1	0	0.79	1.82
Junc 10	0	1.07	2.47
Junc 100	0	0.79	1.82
Junc 105	0	1.01	2.33
Junc 107	0	1.44	3.33
Junc 11	0	1.3	3.00
Junc 110	0	1.44	3.33
Junc 12	0	4.78	11.04
Junc 120	0	1.44	3.33
Junc 13	0	-0.64	-1.48
Junc 130	0	1.31	3.03
Junc 14	0	-0.18	-0.42
Junc 140	0	1.3	3.00
Junc 15	0	0.79	1.82
Junc 150	0	1.24	2.86
Junc 16	0	0.57	1.32
Junc 160	0	0.1	0.23
Junc 17	0	1.44	3.33
Junc 170	0	1.18	2.73
Junc 172	0	1.16	2.68
Junc 18	0	1.16	2.68
Junc 180	0	1.09	2.52
Junc 185	0	1.07	2.47
Junc 2	0	0.1	0.23
Junc 200	0	1.18	2.73
Junc 210	0	1.18	2.73
Junc 220	0	1.18	2.73
Junc 280	0	1.18	2.73
Junc 290	0	1.18	2.73
Junc 350	0	1.31	3.03
Junc 370	0	1.31	3.03
Junc 4	0	1.18	2.73
Junc 400	0	-0.42	-0.97
Junc 410	0	-0.98	-2.26
Junc 420	0	-1.24	-2.86
Junc 430	0	-1.03	-2.38
Junc 440	0	-1.07	-2.47
Junc 450	0	-1.16	-2.68
Junc 500	0	-0.18	-0.42
Junc 510	0	-0.18	-0.42
Junc 6	0	0.57	1.32
Junc 600	0	1.01	2.33
Junc 7	0	8.37	19.33
Junc 8	0	1.24	2.86

City of Fellsmere Pressurized Sanitary Transmission System
Pump Station 7 Pumping Alone

Node ID	Demand	Pressure	
	GPM	psi	ft
Junc 9	0	1.09	2.52
Junc PS-1	0	4.82	11.13
Junc PS-10	0	1.07	2.47
Junc PS-11	0	1.3	3.00
Junc PS-12	0	7.38	17.05
Junc PS-13	0	3.69	8.52
Junc PS-14	0	2.65	6.12
Junc PS-15	0	5.47	12.64
Junc PS-16	0	0.57	1.32
Junc PS-17	0	1.44	3.33
Junc PS-18	0	-1.65	-3.81
Junc PS-2	0	2.79	6.44
Junc PS-4	0	5.08	11.73
Junc PS-5	0	4.43	10.23
Junc PS-6	0	0.57	1.32
Junc PS-7	0	10.65	24.60
Junc PS-8	0	1.24	2.86
Junc PS-9	0	1.09	2.52
Resvr PS-10-WW	0	0	0.00
Resvr PS-11-WW	0	0	0.00
Resvr PS-12-WW	0	0	0.00
Resvr PS-13-WW	0	0	0.00
Resvr PS-14-WW	0	0	0.00
Resvr PS-15-WW	0	0	0.00
Resvr PS-16-WW	0	0	0.00
Resvr PS-17-WW	0	0	0.00
Resvr PS-18-WW	0	0	0.00
Resvr PS-1-WW	0	0	0.00
Resvr PS-2-WW	0	0	0.00
Resvr PS-3-WW	46.12	0	0.00
Resvr PS-4-WW	0	0	0.00
Resvr PS-5-WW	0	0	0.00
Resvr PS-6-WW	0	0	0.00
Resvr PS-7-WW	-46.12	0	0.00
Resvr PS-8-WW	0	0	0.00
Resvr PS-9-WW	0	0	0.00

Note: Pump station is pumping beyond pump curve

City of Fellsmere Pressurized Sanitary Transmission System
Pump Station 8 Pumping Alone

Node ID	Demand	Pressure	
	GPM	psi	ft
Junc 1	0	0.57	1.32
Junc 10	0	1.06	2.45
Junc 100	0	0.57	1.32
Junc 105	0	0.78	1.80
Junc 107	0	1.22	2.82
Junc 11	0	1.22	2.82
Junc 110	0	1.22	2.82
Junc 12	0	4.68	10.81
Junc 120	0	1.22	2.82
Junc 13	0	-0.66	-1.52
Junc 130	0	1.22	2.82
Junc 14	0	-0.41	-0.95
Junc 140	0	1.22	2.82
Junc 15	0	0.57	1.32
Junc 150	0	1.22	2.82
Junc 16	0	0.35	0.81
Junc 160	0	0.08	0.18
Junc 17	0	1.22	2.82
Junc 170	0	1.16	2.68
Junc 172	0	1.14	2.63
Junc 18	0	1.14	2.63
Junc 180	0	1.07	2.47
Junc 185	0	1.06	2.45
Junc 2	0	0.08	0.18
Junc 200	0	1.16	2.68
Junc 210	0	1.16	2.68
Junc 220	0	1.16	2.68
Junc 280	0	1.16	2.68
Junc 290	0	1.16	2.68
Junc 350	0	1.22	2.82
Junc 370	0	1.22	2.82
Junc 4	0	1.16	2.68
Junc 400	0	-0.45	-1.04
Junc 410	0	-1.01	-2.33
Junc 420	0	-1.27	-2.93
Junc 430	0	-1.05	-2.43
Junc 440	0	-1.1	-2.54
Junc 450	0	-1.18	-2.73
Junc 500	0	-0.41	-0.95
Junc 510	0	-0.41	-0.95
Junc 6	0	0.35	0.81
Junc 600	0	0.78	1.80
Junc 7	0	1.22	2.82
Junc 8	0	3	6.93

City of Fellsmere Pressurized Sanitary Transmission System
Pump Station 8 Pumping Alone

Node ID	Demand	Pressure	
	GPM	psi	ft
Junc 9	0	1.07	2.47
Junc PS-1	0	4.6	10.63
Junc PS-10	0	1.06	2.45
Junc PS-11	0	1.22	2.82
Junc PS-12	0	7.28	16.82
Junc PS-13	0	3.67	8.48
Junc PS-14	0	2.43	5.61
Junc PS-15	0	5.25	12.13
Junc PS-16	0	0.35	0.81
Junc PS-17	0	1.22	2.82
Junc PS-18	0	-1.68	-3.88
Junc PS-2	0	2.76	6.38
Junc PS-4	0	5.06	11.69
Junc PS-5	0	4.41	10.19
Junc PS-6	0	0.35	0.81
Junc PS-7	0	1.22	2.82
Junc PS-8	0	5.1	11.78
Junc PS-9	0	1.07	2.47
Resvr PS-10-WW	0	0	0.00
Resvr PS-11-WW	0	0	0.00
Resvr PS-12-WW	0	0	0.00
Resvr PS-13-WW	0	0	0.00
Resvr PS-14-WW	0	0	0.00
Resvr PS-15-WW	0	0	0.00
Resvr PS-16-WW	0	0	0.00
Resvr PS-17-WW	0	0	0.00
Resvr PS-18-WW	0	0	0.00
Resvr PS-1-WW	0	0	0.00
Resvr PS-2-WW	0	0	0.00
Resvr PS-3-WW	44.21	0	0.00
Resvr PS-4-WW	0	0	0.00
Resvr PS-5-WW	0	0	0.00
Resvr PS-6-WW	0	0	0.00
Resvr PS-7-WW	0	0	0.00
Resvr PS-8-WW	-44.21	0	0.00
Resvr PS-9-WW	0	0	0.00

Note: Pump station is pumping beyond pump curve

City of Fellsmere Pressurized Sanitary Transmission System
Pump Station 9 Pumping Alone

Node ID	Demand		Pressure	
	GPM	psi	ft	
Junc 1	0	0.39	0.90	
Junc 10	0	1.03	2.38	
Junc 100	0	0.39	0.90	
Junc 105	0	0.61	1.41	
Junc 107	0	1.04	2.40	
Junc 11	0	1.04	2.40	
Junc 110	0	1.04	2.40	
Junc 12	0	4.51	10.42	
Junc 120	0	1.04	2.40	
Junc 13	0	-0.78	-1.80	
Junc 130	0	1.04	2.40	
Junc 14	0	-0.58	-1.34	
Junc 140	0	1.04	2.40	
Junc 15	0	0.39	0.90	
Junc 150	0	1.04	2.40	
Junc 16	0	0.17	0.39	
Junc 160	0	-0.04	-0.09	
Junc 17	0	1.04	2.40	
Junc 170	0	1.04	2.40	
Junc 172	0	1.04	2.40	
Junc 18	0	1.04	2.40	
Junc 180	0	1.04	2.40	
Junc 185	0	1.03	2.38	
Junc 2	0	-0.04	-0.09	
Junc 200	0	1.04	2.40	
Junc 210	0	1.04	2.40	
Junc 220	0	1.04	2.40	
Junc 280	0	1.04	2.40	
Junc 290	0	1.04	2.40	
Junc 350	0	1.04	2.40	
Junc 370	0	1.04	2.40	
Junc 4	0	1.04	2.40	
Junc 400	0	-0.56	-1.29	
Junc 410	0	-1.13	-2.61	
Junc 420	0	-1.39	-3.21	
Junc 430	0	-1.17	-2.70	
Junc 440	0	-1.21	-2.80	
Junc 450	0	-1.3	-3.00	
Junc 500	0	-0.58	-1.34	
Junc 510	0	-0.58	-1.34	
Junc 6	0	0.17	0.39	
Junc 600	0	0.61	1.41	
Junc 7	0	1.04	2.40	
Junc 8	0	1.04	2.40	

City of Fellsmere Pressurized Sanitary Transmission System
Pump Station 9 Pumping Alone

Node ID	Demand	Pressure	
	GPM	psi	ft
Junc 9	0	13.45	31.07
Junc PS-1	0	4.42	10.21
Junc PS-10	0	1.03	2.38
Junc PS-11	0	1.04	2.40
Junc PS-12	0	7.11	16.42
Junc PS-13	0	3.55	8.20
Junc PS-14	0	2.25	5.20
Junc PS-15	0	5.07	11.71
Junc PS-16	0	0.17	0.39
Junc PS-17	0	1.04	2.40
Junc PS-18	0	-1.78	-4.11
Junc PS-2	0	2.64	6.10
Junc PS-4	0	4.94	11.41
Junc PS-5	0	4.29	9.91
Junc PS-6	0	0.17	0.39
Junc PS-7	0	1.04	2.40
Junc PS-8	0	1.04	2.40
Junc PS-9	0	15.26	35.25
Resvr PS-10-WW	0	0	0.00
Resvr PS-11-WW	0	0	0.00
Resvr PS-12-WW	0	0	0.00
Resvr PS-13-WW	0	0	0.00
Resvr PS-14-WW	0	0	0.00
Resvr PS-15-WW	0	0	0.00
Resvr PS-16-WW	0	0	0.00
Resvr PS-17-WW	0	0	0.00
Resvr PS-18-WW	0	0	0.00
Resvr PS-1-WW	0	0	0.00
Resvr PS-2-WW	0	0	0.00
Resvr PS-3-WW	40.83	0	0.00
Resvr PS-4-WW	0	0	0.00
Resvr PS-5-WW	0	0	0.00
Resvr PS-6-WW	0	0	0.00
Resvr PS-7-WW	0	0	0.00
Resvr PS-8-WW	0	0	0.00
Resvr PS-9-WW	-40.83	0	0.00

City of Fellsmere Pressurized Sanitary Transmission System
Pump Station 10 Pumping Alone

Node ID	Demand	Pressure	
	GPM	psi	ft
Junc 1	0	0.42	0.97
Junc 10	0	2.41	5.57
Junc 100	0	0.42	0.97
Junc 105	0	0.63	1.46
Junc 107	0	1.07	2.47
Junc 11	0	1.07	2.47
Junc 110	0	1.07	2.47
Junc 12	0	4.53	10.46
Junc 120	0	1.07	2.47
Junc 13	0	-0.75	-1.73
Junc 130	0	1.07	2.47
Junc 14	0	-0.56	-1.29
Junc 140	0	1.07	2.47
Junc 15	0	0.42	0.97
Junc 150	0	1.07	2.47
Junc 16	0	0.2	0.46
Junc 160	0	-0.02	-0.05
Junc 17	0	1.07	2.47
Junc 170	0	1.07	2.47
Junc 172	0	1.07	2.47
Junc 18	0	1.07	2.47
Junc 180	0	1.07	2.47
Junc 185	0	1.07	2.47
Junc 2	0	-0.02	-0.05
Junc 200	0	1.07	2.47
Junc 210	0	1.07	2.47
Junc 220	0	1.07	2.47
Junc 280	0	1.07	2.47
Junc 290	0	1.07	2.47
Junc 350	0	1.07	2.47
Junc 370	0	1.07	2.47
Junc 4	0	1.07	2.47
Junc 400	0	-0.54	-1.25
Junc 410	0	-1.1	-2.54
Junc 420	0	-1.36	-3.14
Junc 430	0	-1.14	-2.63
Junc 440	0	-1.19	-2.75
Junc 450	0	-1.27	-2.93
Junc 500	0	-0.56	-1.29
Junc 510	0	-0.56	-1.29
Junc 6	0	0.2	0.46
Junc 600	0	0.63	1.46
Junc 7	0	1.07	2.47
Junc 8	0	1.07	2.47

City of Fellsmere Pressurized Sanitary Transmission System
Pump Station 10 Pumping Alone

Node ID	Demand	Pressure	
	GPM	psi	ft
Junc 9	0	1.07	2.47
Junc PS-1	0	4.45	10.28
Junc PS-10	0	3.16	7.30
Junc PS-11	0	1.07	2.47
Junc PS-12	0	7.13	16.47
Junc PS-13	0	3.58	8.27
Junc PS-14	0	2.28	5.27
Junc PS-15	0	5.1	11.78
Junc PS-16	0	0.2	0.46
Junc PS-17	0	1.07	2.47
Junc PS-18	0	-1.75	-4.04
Junc PS-2	0	2.67	6.17
Junc PS-4	0	4.97	11.48
Junc PS-5	0	4.32	9.98
Junc PS-6	0	0.2	0.46
Junc PS-7	0	1.07	2.47
Junc PS-8	0	1.07	2.47
Junc PS-9	0	1.07	2.47
Resvr PS-10-WW	-45.51	0	0.00
Resvr PS-11-WW	0	0	0.00
Resvr PS-12-WW	0	0	0.00
Resvr PS-13-WW	0	0	0.00
Resvr PS-14-WW	0	0	0.00
Resvr PS-15-WW	0	0	0.00
Resvr PS-16-WW	0	0	0.00
Resvr PS-17-WW	0	0	0.00
Resvr PS-18-WW	0	0	0.00
Resvr PS-1-WW	0	0	0.00
Resvr PS-2-WW	0	0	0.00
Resvr PS-3-WW	45.51	0	0.00
Resvr PS-4-WW	0	0	0.00
Resvr PS-5-WW	0	0	0.00
Resvr PS-6-WW	0	0	0.00
Resvr PS-7-WW	0	0	0.00
Resvr PS-8-WW	0	0	0.00
Resvr PS-9-WW	0	0	0.00

Note: Pump station is pumping beyond pump curve

City of Fellsmere Pressurized Sanitary Transmission System
Pump Station 11 Pumping Alone

Node ID	Demand	Pressure	
	GPM	psi	ft
Junc 1	0	0.61	1.41
Junc 10	0	1.06	2.45
Junc 100	0	0.61	1.41
Junc 105	0	0.83	1.92
Junc 107	0	1.26	2.91
Junc 11	0	3.05	7.05
Junc 110	0	1.26	2.91
Junc 12	0	4.73	10.93
Junc 120	0	1.26	2.91
Junc 13	0	-0.66	-1.52
Junc 130	0	1.26	2.91
Junc 14	0	-0.36	-0.83
Junc 140	0	1.26	2.91
Junc 15	0	0.61	1.41
Junc 150	0	1.22	2.82
Junc 16	0	0.4	0.92
Junc 160	0	0.08	0.18
Junc 17	0	1.26	2.91
Junc 170	0	1.16	2.68
Junc 172	0	1.14	2.63
Junc 18	0	1.14	2.63
Junc 180	0	1.07	2.47
Junc 185	0	1.06	2.45
Junc 2	0	0.08	0.18
Junc 200	0	1.16	2.68
Junc 210	0	1.16	2.68
Junc 220	0	1.16	2.68
Junc 280	0	1.16	2.68
Junc 290	0	1.16	2.68
Junc 350	0	1.26	2.91
Junc 370	0	1.26	2.91
Junc 4	0	1.16	2.68
Junc 400	0	-0.45	-1.04
Junc 410	0	-1.01	-2.33
Junc 420	0	-1.27	-2.93
Junc 430	0	-1.05	-2.43
Junc 440	0	-1.1	-2.54
Junc 450	0	-1.18	-2.73
Junc 500	0	-0.36	-0.83
Junc 510	0	-0.36	-0.83
Junc 6	0	0.4	0.92
Junc 600	0	0.83	1.92
Junc 7	0	1.26	2.91
Junc 8	0	1.22	2.82

City of Fellsmere Pressurized Sanitary Transmission System
Pump Station 11 Pumping Alone

Node ID	Demand	Pressure	
	GPM	psi	ft
Junc 9	0	1.07	2.47
Junc PS-1	0	4.64	10.72
Junc PS-10	0	1.06	2.45
Junc PS-11	0	5.15	11.90
Junc PS-12	0	7.33	16.93
Junc PS-13	0	3.67	8.48
Junc PS-14	0	2.48	5.73
Junc PS-15	0	5.29	12.22
Junc PS-16	0	0.4	0.92
Junc PS-17	0	1.26	2.91
Junc PS-18	0	-1.68	-3.88
Junc PS-2	0	2.76	6.38
Junc PS-4	0	5.06	11.69
Junc PS-5	0	4.41	10.19
Junc PS-6	0	0.4	0.92
Junc PS-7	0	1.26	2.91
Junc PS-8	0	1.22	2.82
Junc PS-9	0	1.07	2.47
Resvr PS-10-WW	0	0	0.00
Resvr PS-11-WW	-44.19	0	0.00
Resvr PS-12-WW	0	0	0.00
Resvr PS-13-WW	0	0	0.00
Resvr PS-14-WW	0	0	0.00
Resvr PS-15-WW	0	0	0.00
Resvr PS-16-WW	0	0	0.00
Resvr PS-17-WW	0	0	0.00
Resvr PS-18-WW	0	0	0.00
Resvr PS-1-WW	0	0	0.00
Resvr PS-2-WW	0	0	0.00
Resvr PS-3-WW	44.19	0	0.00
Resvr PS-4-WW	0	0	0.00
Resvr PS-5-WW	0	0	0.00
Resvr PS-6-WW	0	0	0.00
Resvr PS-7-WW	0	0	0.00
Resvr PS-8-WW	0	0	0.00
Resvr PS-9-WW	0	0	0.00

Note: Pump station is pumping beyond pump curve

City of Fellsmere Pressurized Sanitary Transmission System
Pump Station 12 Pumping Alone

Node ID	Demand	Pressure	
	GPM	psi	ft
Junc 1	0	11.74	27.12
Junc 10	0	6.16	14.23
Junc 100	0	11.74	27.12
Junc 105	0	11.96	27.63
Junc 107	0	12.39	28.62
Junc 11	0	11.95	27.60
Junc 110	0	12.39	28.62
Junc 12	0	33.82	78.12
Junc 120	0	12.39	28.62
Junc 13	0	7.16	16.54
Junc 130	0	12.39	28.62
Junc 14	0	10.77	24.88
Junc 140	0	11.95	27.60
Junc 15	0	11.74	27.12
Junc 150	0	10.61	24.51
Junc 16	0	11.53	26.63
Junc 160	0	7.92	18.30
Junc 17	0	12.39	28.62
Junc 170	0	8.98	20.74
Junc 172	0	8.51	19.66
Junc 18	0	8.51	19.66
Junc 180	0	6.5	15.02
Junc 185	0	6.16	14.23
Junc 2	0	7.92	18.30
Junc 200	0	8.98	20.74
Junc 210	0	8.98	20.74
Junc 220	0	8.98	20.74
Junc 280	0	8.98	20.74
Junc 290	0	8.98	20.74
Junc 350	0	22.54	52.07
Junc 370	0	29.85	68.95
Junc 4	0	8.98	20.74
Junc 400	0	7.38	17.05
Junc 410	0	6.81	15.73
Junc 420	0	6.55	15.13
Junc 430	0	6.77	15.64
Junc 440	0	6.73	15.55
Junc 450	0	6.64	15.34
Junc 500	0	10.77	24.88
Junc 510	0	10.77	24.88
Junc 6	0	11.53	26.63
Junc 600	0	11.96	27.63
Junc 7	0	12.39	28.62
Junc 8	0	10.61	24.51

City of Fellsmere Pressurized Sanitary Transmission System
Pump Station 12 Pumping Alone

Node ID	Demand	Pressure	
	GPM	psi	ft
Junc 9	0	6.5	15.02
Junc PS-1	0	15.77	36.43
Junc PS-10	0	6.16	14.23
Junc PS-11	0	11.95	27.60
Junc PS-12	0	38.43	88.77
Junc PS-13	0	11.49	26.54
Junc PS-14	0	13.61	31.44
Junc PS-15	0	16.42	37.93
Junc PS-16	0	11.53	26.63
Junc PS-17	0	12.39	28.62
Junc PS-18	0	5.69	13.14
Junc PS-2	0	10.6	24.49
Junc PS-4	0	12.88	29.75
Junc PS-5	0	12.23	28.25
Junc PS-6	0	11.53	26.63
Junc PS-7	0	12.39	28.62
Junc PS-8	0	10.61	24.51
Junc PS-9	0	6.5	15.02
Resvr PS-10-WW	0	0	0.00
Resvr PS-11-WW	0	0	0.00
Resvr PS-12-WW	-266.5	0	0.00
Resvr PS-13-WW	0	0	0.00
Resvr PS-14-WW	0	0	0.00
Resvr PS-15-WW	0	0	0.00
Resvr PS-16-WW	0	0	0.00
Resvr PS-17-WW	0	0	0.00
Resvr PS-18-WW	0	0	0.00
Resvr PS-1-WW	0	0	0.00
Resvr PS-2-WW	0	0	0.00
Resvr PS-3-WW	266.49	0	0.00
Resvr PS-4-WW	0	0	0.00
Resvr PS-5-WW	0	0	0.00
Resvr PS-6-WW	0	0	0.00
Resvr PS-7-WW	0	0	0.00
Resvr PS-8-WW	0	0	0.00
Resvr PS-9-WW	0	0	0.00

City of Fellsmere Pressurized Sanitary Transmission System
Pump Station 13 Pumping Alone

Node ID	Demand	Pressure	
	GPM	psi	ft
Junc 1	0	1.69	3.90
Junc 10	0	1.83	4.23
Junc 100	0	1.69	3.90
Junc 105	0	1.91	4.41
Junc 107	0	2.34	5.41
Junc 11	0	2.34	5.41
Junc 110	0	2.34	5.41
Junc 12	0	5.81	13.42
Junc 120	0	2.34	5.41
Junc 13	0	40.7	94.02
Junc 130	0	2.34	5.41
Junc 14	0	0.72	1.66
Junc 140	0	2.34	5.41
Junc 15	0	1.69	3.90
Junc 150	0	2.34	5.41
Junc 16	0	1.48	3.42
Junc 160	0	1.26	2.91
Junc 17	0	2.34	5.41
Junc 170	0	2.34	5.41
Junc 172	0	2.26	5.22
Junc 18	0	2.26	5.22
Junc 180	0	1.89	4.37
Junc 185	0	1.83	4.23
Junc 2	0	1.26	2.91
Junc 200	0	2.38	5.50
Junc 210	0	3.01	6.95
Junc 220	0	3.43	7.92
Junc 280	0	15.79	36.47
Junc 290	0	20.16	46.57
Junc 350	0	2.34	5.41
Junc 370	0	2.34	5.41
Junc 4	0	3.43	7.92
Junc 400	0	20.94	48.37
Junc 410	0	22.53	52.04
Junc 420	0	25.39	58.65
Junc 430	0	34.99	80.83
Junc 440	0	39.68	91.66
Junc 450	0	20.21	46.69
Junc 500	0	0.72	1.66
Junc 510	0	0.72	1.66
Junc 6	0	1.48	3.42
Junc 600	0	1.91	4.41
Junc 7	0	2.34	5.41
Junc 8	0	2.34	5.41

City of Fellsmere Pressurized Sanitary Transmission System
Pump Station 13 Pumping Alone

Node ID	Demand	Pressure	
	GPM	psi	ft
Junc 9	0	1.89	4.37
Junc PS-1	0	5.72	13.21
Junc PS-10	0	1.83	4.23
Junc PS-11	0	2.34	5.41
Junc PS-12	0	8.41	19.43
Junc PS-13	0	46.52	107.46
Junc PS-14	0	3.56	8.22
Junc PS-15	0	6.37	14.71
Junc PS-16	0	1.48	3.42
Junc PS-17	0	2.34	5.41
Junc PS-18	0	-0.56	-1.29
Junc PS-2	0	3.95	9.12
Junc PS-4	0	7.33	16.93
Junc PS-5	0	23.41	54.08
Junc PS-6	0	1.48	3.42
Junc PS-7	0	2.34	5.41
Junc PS-8	0	2.34	5.41
Junc PS-9	0	1.89	4.37
Resvr PS-10-WW	0	0	0.00
Resvr PS-11-WW	0	0	0.00
Resvr PS-12-WW	0	0	0.00
Resvr PS-13-WW	-106.26	0	0.00
Resvr PS-14-WW	0	0	0.00
Resvr PS-15-WW	0	0	0.00
Resvr PS-16-WW	0	0	0.00
Resvr PS-17-WW	0	0	0.00
Resvr PS-18-WW	0	0	0.00
Resvr PS-1-WW	0	0	0.00
Resvr PS-2-WW	0	0	0.00
Resvr PS-3-WW	106.26	0	0.00
Resvr PS-4-WW	0	0	0.00
Resvr PS-5-WW	0	0	0.00
Resvr PS-6-WW	0	0	0.00
Resvr PS-7-WW	0	0	0.00
Resvr PS-8-WW	0	0	0.00
Resvr PS-9-WW	0	0	0.00

City of Fellsmere Pressurized Sanitary Transmission System
Pump Station 14 Pumping Alone

Node ID	Demand	Pressure	
	GPM	psi	ft
Junc 1	0	2.14	4.94
Junc 10	0	1.34	3.10
Junc 100	0	2.14	4.94
Junc 105	0	2.19	5.06
Junc 107	0	2.59	5.98
Junc 11	0	1.86	4.30
Junc 110	0	2.33	5.38
Junc 12	0	5.36	12.38
Junc 120	0	2.19	5.06
Junc 13	0	-0.23	-0.53
Junc 130	0	1.9	4.39
Junc 14	0	12.5	28.88
Junc 140	0	1.86	4.30
Junc 15	0	1.98	4.57
Junc 150	0	1.74	4.02
Junc 16	0	1.72	3.97
Junc 160	0	0.51	1.18
Junc 17	0	2.79	6.44
Junc 170	0	1.59	3.67
Junc 172	0	1.55	3.58
Junc 18	0	1.55	3.58
Junc 180	0	1.37	3.16
Junc 185	0	1.34	3.10
Junc 2	0	0.51	1.18
Junc 200	0	1.59	3.67
Junc 210	0	1.59	3.67
Junc 220	0	1.59	3.67
Junc 280	0	1.59	3.67
Junc 290	0	1.59	3.67
Junc 350	0	1.9	4.39
Junc 370	0	1.9	4.39
Junc 4	0	1.59	3.67
Junc 400	0	-0.01	-0.02
Junc 410	0	-0.57	-1.32
Junc 420	0	-0.83	-1.92
Junc 430	0	-0.62	-1.43
Junc 440	0	-0.66	-1.52
Junc 450	0	-0.75	-1.73
Junc 500	0	1.23	2.84
Junc 510	0	1.72	3.97
Junc 6	0	1.47	3.40
Junc 600	0	2.19	5.06
Junc 7	0	2.19	5.06
Junc 8	0	1.74	4.02

City of Fellsmere Pressurized Sanitary Transmission System

Pump Station 14 Pumping Alone

Node ID	Demand	Pressure	
	GPM	psi	ft
Junc 9	0	1.37	3.16
Junc PS-1	0	6.17	14.25
Junc PS-10	0	1.34	3.10
Junc PS-11	0	1.86	4.30
Junc PS-12	0	7.96	18.39
Junc PS-13	0	4.11	9.49
Junc PS-14	0	20.58	47.54
Junc PS-15	0	6.66	15.38
Junc PS-16	0	1.72	3.97
Junc PS-17	0	2.79	6.44
Junc PS-18	0	-1.27	-2.93
Junc PS-2	0	3.2	7.39
Junc PS-4	0	5.49	12.68
Junc PS-5	0	4.84	11.18
Junc PS-6	0	1.47	3.40
Junc PS-7	0	2.19	5.06
Junc PS-8	0	1.74	4.02
Junc PS-9	0	1.37	3.16
Resvr PS-10-WW	0	0	0.00
Resvr PS-11-WW	0	0	0.00
Resvr PS-12-WW	0	0	0.00
Resvr PS-13-WW	0	0	0.00
Resvr PS-14-WW	-72.37	0	0.00
Resvr PS-15-WW	0	0	0.00
Resvr PS-16-WW	0	0	0.00
Resvr PS-17-WW	0	0	0.00
Resvr PS-18-WW	0	0	0.00
Resvr PS-1-WW	0	0	0.00
Resvr PS-2-WW	0	0	0.00
Resvr PS-3-WW	72.37	0	0.00
Resvr PS-4-WW	0	0	0.00
Resvr PS-5-WW	0	0	0.00
Resvr PS-6-WW	0	0	0.00
Resvr PS-7-WW	0	0	0.00
Resvr PS-8-WW	0	0	0.00
Resvr PS-9-WW	0	0	0.00

City of Fellsmere Pressurized Sanitary Transmission System

Pump Station 15 Pumping Alone

Node ID	Demand	Pressure	
	GPM	psi	ft
Junc 1	0	1.28	2.96
Junc 10	0	1.15	2.66
Junc 100	0	1.28	2.96
Junc 105	0	1.5	3.47
Junc 107	0	1.91	4.41
Junc 11	0	1.46	3.37
Junc 110	0	1.75	4.04
Junc 12	0	4.96	11.46
Junc 120	0	1.66	3.83
Junc 13	0	-0.52	-1.20
Junc 130	0	1.49	3.44
Junc 14	0	0.3	0.69
Junc 140	0	1.46	3.37
Junc 15	0	8.97	20.72
Junc 150	0	1.39	3.21
Junc 16	0	1.04	2.40
Junc 160	0	0.22	0.51
Junc 17	0	1.93	4.46
Junc 170	0	1.3	3.00
Junc 172	0	1.28	2.96
Junc 18	0	1.28	2.96
Junc 180	0	1.17	2.70
Junc 185	0	1.15	2.66
Junc 2	0	0.22	0.51
Junc 200	0	1.3	3.00
Junc 210	0	1.3	3.00
Junc 220	0	1.3	3.00
Junc 280	0	1.3	3.00
Junc 290	0	1.3	3.00
Junc 350	0	1.49	3.44
Junc 370	0	1.49	3.44
Junc 4	0	1.3	3.00
Junc 400	0	-0.3	-0.69
Junc 410	0	-0.86	-1.99
Junc 420	0	-1.12	-2.59
Junc 430	0	-0.91	-2.10
Junc 440	0	-0.95	-2.19
Junc 450	0	-1.04	-2.40
Junc 500	0	0.3	0.69
Junc 510	0	0.3	0.69
Junc 6	0	0.89	2.06
Junc 600	0	9.15	21.14
Junc 7	0	1.66	3.83
Junc 8	0	1.39	3.21

City of Fellsmere Pressurized Sanitary Transmission System

Pump Station 15 Pumping Alone

Node ID	Demand	Pressure	
	GPM	psi	ft
Junc 9	0	1.17	2.70
Junc PS-1	0	5.31	12.27
Junc PS-10	0	1.15	2.66
Junc PS-11	0	1.46	3.37
Junc PS-12	0	7.55	17.44
Junc PS-13	0	3.82	8.82
Junc PS-14	0	3.14	7.25
Junc PS-15	0	16.81	38.83
Junc PS-16	0	1.04	2.40
Junc PS-17	0	1.93	4.46
Junc PS-18	0	-1.54	-3.56
Junc PS-2	0	2.91	6.72
Junc PS-4	0	5.2	12.01
Junc PS-5	0	4.55	10.51
Junc PS-6	0	0.89	2.06
Junc PS-7	0	1.66	3.83
Junc PS-8	0	1.39	3.21
Junc PS-9	0	1.17	2.70
Resvr PS-10-WW	0	0	0.00
Resvr PS-11-WW	0	0	0.00
Resvr PS-12-WW	0	0	0.00
Resvr PS-13-WW	0	0	0.00
Resvr PS-14-WW	0	0	0.00
Resvr PS-15-WW	-55.09	0	0.00
Resvr PS-16-WW	0	0	0.00
Resvr PS-17-WW	0	0	0.00
Resvr PS-18-WW	0	0	0.00
Resvr PS-1-WW	0	0	0.00
Resvr PS-2-WW	0	0	0.00
Resvr PS-3-WW	55.09	0	0.00
Resvr PS-4-WW	0	0	0.00
Resvr PS-5-WW	0	0	0.00
Resvr PS-6-WW	0	0	0.00
Resvr PS-7-WW	0	0	0.00
Resvr PS-8-WW	0	0	0.00
Resvr PS-9-WW	0	0	0.00

City of Fellsmere Pressurized Sanitary Transmission System

Pump Station 16 Pumping Alone

Node ID	Demand	Pressure	
	GPM	psi	ft
Junc 1	0	1	2.31
Junc 10	0	1.08	2.49
Junc 100	0	1	2.31
Junc 105	0	1.21	2.80
Junc 107	0	1.65	3.81
Junc 11	0	1.32	3.05
Junc 110	0	1.53	3.53
Junc 12	0	4.8	11.09
Junc 120	0	1.46	3.37
Junc 13	0	-0.62	-1.43
Junc 130	0	1.33	3.07
Junc 14	0	0.02	0.05
Junc 140	0	1.32	3.05
Junc 15	0	1	2.31
Junc 150	0	1.26	2.91
Junc 16	0	8.36	19.31
Junc 160	0	0.11	0.25
Junc 17	0	1.65	3.81
Junc 170	0	1.2	2.77
Junc 172	0	1.18	2.73
Junc 18	0	1.18	2.73
Junc 180	0	1.09	2.52
Junc 185	0	1.08	2.49
Junc 2	0	0.11	0.25
Junc 200	0	1.2	2.77
Junc 210	0	1.2	2.77
Junc 220	0	1.2	2.77
Junc 280	0	1.2	2.77
Junc 290	0	1.2	2.77
Junc 350	0	1.33	3.07
Junc 370	0	1.33	3.07
Junc 4	0	1.2	2.77
Junc 400	0	-0.41	-0.95
Junc 410	0	-0.97	-2.24
Junc 420	0	-1.23	-2.84
Junc 430	0	-1.01	-2.33
Junc 440	0	-1.06	-2.45
Junc 450	0	-1.14	-2.63
Junc 500	0	0.02	0.05
Junc 510	0	0.02	0.05
Junc 6	0	0.66	1.52
Junc 600	0	1.21	2.80
Junc 7	0	1.46	3.37
Junc 8	0	1.26	2.91

City of Fellsmere Pressurized Sanitary Transmission System

Pump Station 16 Pumping Alone

Node ID	Demand	Pressure	
	GPM	psi	ft
Junc 9	0	1.09	2.52
Junc PS-1	0	5.03	11.62
Junc PS-10	0	1.08	2.49
Junc PS-11	0	1.32	3.05
Junc PS-12	0	7.4	17.09
Junc PS-13	0	3.71	8.57
Junc PS-14	0	2.86	6.61
Junc PS-15	0	5.68	13.12
Junc PS-16	0	10.73	24.79
Junc PS-17	0	1.65	3.81
Junc PS-18	0	-1.64	-3.79
Junc PS-2	0	2.8	6.47
Junc PS-4	0	5.09	11.76
Junc PS-5	0	4.44	10.26
Junc PS-6	0	0.66	1.52
Junc PS-7	0	1.46	3.37
Junc PS-8	0	1.26	2.91
Junc PS-9	0	1.09	2.52
Resvr PS-10-WW	0	0	0.00
Resvr PS-11-WW	0	0	0.00
Resvr PS-12-WW	0	0	0.00
Resvr PS-13-WW	0	0	0.00
Resvr PS-14-WW	0	0	0.00
Resvr PS-15-WW	0	0	0.00
Resvr PS-16-WW	-47.18	0	0.00
Resvr PS-17-WW	0	0	0.00
Resvr PS-18-WW	0	0	0.00
Resvr PS-1-WW	0	0	0.00
Resvr PS-2-WW	0	0	0.00
Resvr PS-3-WW	47.18	0	0.00
Resvr PS-4-WW	0	0	0.00
Resvr PS-5-WW	0	0	0.00
Resvr PS-6-WW	0	0	0.00
Resvr PS-7-WW	0	0	0.00
Resvr PS-8-WW	0	0	0.00
Resvr PS-9-WW	0	0	0.00

Note: Pump station is pumping beyond pump curve

City of Fellsmere Pressurized Sanitary Transmission System

Pump Station 17 Pumping Alone

Node ID	Demand	Pressure	
	GPM	psi	ft
Junc 1	0	12.48	28.83
Junc 10	0	3.88	8.96
Junc 100	0	12.48	28.83
Junc 105	0	11.64	26.89
Junc 107	0	11.82	27.30
Junc 11	0	7.18	16.59
Junc 110	0	10.21	23.59
Junc 12	0	10.9	25.18
Junc 120	0	9.27	21.41
Junc 13	0	3.67	8.48
Junc 130	0	7.43	17.16
Junc 14	0	11.5	26.57
Junc 140	0	7.18	16.59
Junc 15	0	11.42	26.38
Junc 150	0	6.41	14.81
Junc 16	0	10.96	25.32
Junc 160	0	4.41	10.19
Junc 17	0	24.69	57.03
Junc 170	0	5.49	12.68
Junc 172	0	5.22	12.06
Junc 18	0	5.22	12.06
Junc 180	0	4.07	9.40
Junc 185	0	3.88	8.96
Junc 2	0	4.41	10.19
Junc 200	0	5.49	12.68
Junc 210	0	5.49	12.68
Junc 220	0	5.49	12.68
Junc 280	0	5.49	12.68
Junc 290	0	5.49	12.68
Junc 350	0	7.43	17.16
Junc 370	0	7.43	17.16
Junc 4	0	5.49	12.68
Junc 400	0	3.88	8.96
Junc 410	0	3.32	7.67
Junc 420	0	3.06	7.07
Junc 430	0	3.28	7.58
Junc 440	0	3.23	7.46
Junc 450	0	3.15	7.28
Junc 500	0	11.5	26.57
Junc 510	0	11.5	26.57
Junc 6	0	9.35	21.60
Junc 600	0	11.64	26.89
Junc 7	0	9.27	21.41
Junc 8	0	6.41	14.81

City of Fellsmere Pressurized Sanitary Transmission System

Pump Station 17 Pumping Alone

Node ID	Demand	Pressure	
	GPM	psi	ft
Junc 9	0	4.07	9.40
Junc PS-1	0	16.51	38.14
Junc PS-10	0	3.88	8.96
Junc PS-11	0	7.18	16.59
Junc PS-12	0	13.5	31.19
Junc PS-13	0	8	18.48
Junc PS-14	0	14.34	33.13
Junc PS-15	0	16.1	37.19
Junc PS-16	0	10.96	25.32
Junc PS-17	0	25.83	59.67
Junc PS-18	0	2.4	5.54
Junc PS-2	0	7.1	16.40
Junc PS-4	0	9.38	21.67
Junc PS-5	0	8.73	20.17
Junc PS-6	0	9.35	21.60
Junc PS-7	0	9.27	21.41
Junc PS-8	0	6.41	14.81
Junc PS-9	0	4.07	9.40
Resvr PS-10-WW	0	0	0.00
Resvr PS-11-WW	0	0	0.00
Resvr PS-12-WW	0	0	0.00
Resvr PS-13-WW	0	0	0.00
Resvr PS-14-WW	0	0	0.00
Resvr PS-15-WW	0	0	0.00
Resvr PS-16-WW	0	0	0.00
Resvr PS-17-WW	-196.61	0	0.00
Resvr PS-18-WW	0	0	0.00
Resvr PS-1-WW	0	0	0.00
Resvr PS-2-WW	0	0	0.00
Resvr PS-3-WW	196.61	0	0.00
Resvr PS-4-WW	0	0	0.00
Resvr PS-5-WW	0	0	0.00
Resvr PS-6-WW	0	0	0.00
Resvr PS-7-WW	0	0	0.00
Resvr PS-8-WW	0	0	0.00
Resvr PS-9-WW	0	0	0.00

City of Fellsmere Pressurized Sanitary Transmission System

Pump Station 18 Pumping Alone

Node ID	Demand	Pressure	
	GPM	psi	ft
Junc 1	0	0.53	1.22
Junc 10	0	1.09	2.52
Junc 100	0	0.53	1.22
Junc 105	0	0.75	1.73
Junc 107	0	1.18	2.73
Junc 11	0	1.18	2.73
Junc 110	0	1.18	2.73
Junc 12	0	4.65	10.74
Junc 120	0	1.18	2.73
Junc 13	0	-0.64	-1.48
Junc 130	0	1.18	2.73
Junc 14	0	-0.44	-1.02
Junc 140	0	1.18	2.73
Junc 15	0	0.53	1.22
Junc 150	0	1.18	2.73
Junc 16	0	0.32	0.74
Junc 160	0	0.1	0.23
Junc 17	0	1.18	2.73
Junc 170	0	1.18	2.73
Junc 172	0	1.18	2.73
Junc 18	0	4.83	11.16
Junc 180	0	1.1	2.54
Junc 185	0	1.09	2.52
Junc 2	0	0.1	0.23
Junc 200	0	1.18	2.73
Junc 210	0	1.18	2.73
Junc 220	0	1.18	2.73
Junc 280	0	1.18	2.73
Junc 290	0	1.18	2.73
Junc 350	0	1.18	2.73
Junc 370	0	1.18	2.73
Junc 4	0	1.18	2.73
Junc 400	0	-0.42	-0.97
Junc 410	0	-0.98	-2.26
Junc 420	0	-1.24	-2.86
Junc 430	0	-1.03	-2.38
Junc 440	0	-1.07	-2.47
Junc 450	0	-1.16	-2.68
Junc 500	0	-0.44	-1.02
Junc 510	0	-0.44	-1.02
Junc 6	0	0.32	0.74
Junc 600	0	0.75	1.73
Junc 7	0	1.18	2.73
Junc 8	0	1.18	2.73

City of Fellsmere Pressurized Sanitary Transmission System

Pump Station 18 Pumping Alone

Node ID	Demand	Pressure	
	GPM	psi	ft
Junc 9	0	1.1	2.54
Junc PS-1	0	4.56	10.53
Junc PS-10	0	1.09	2.52
Junc PS-11	0	1.18	2.73
Junc PS-12	0	7.25	16.75
Junc PS-13	0	3.7	8.55
Junc PS-14	0	2.4	5.54
Junc PS-15	0	5.21	12.04
Junc PS-16	0	0.32	0.74
Junc PS-17	0	1.18	2.73
Junc PS-18	0	4.45	10.28
Junc PS-2	0	2.79	6.44
Junc PS-4	0	5.08	11.73
Junc PS-5	0	4.43	10.23
Junc PS-6	0	0.32	0.74
Junc PS-7	0	1.18	2.73
Junc PS-8	0	1.18	2.73
Junc PS-9	0	1.1	2.54
Resvr PS-10-WW	0	0	0.00
Resvr PS-11-WW	0	0	0.00
Resvr PS-12-WW	0	0	0.00
Resvr PS-13-WW	0	0	0.00
Resvr PS-14-WW	0	0	0.00
Resvr PS-15-WW	0	0	0.00
Resvr PS-16-WW	0	0	0.00
Resvr PS-17-WW	0	0	0.00
Resvr PS-18-WW	-47.83	0	0.00
Resvr PS-1-WW	0	0	0.00
Resvr PS-2-WW	0	0	0.00
Resvr PS-3-WW	47.83	0	0.00
Resvr PS-4-WW	0	0	0.00
Resvr PS-5-WW	0	0	0.00
Resvr PS-6-WW	0	0	0.00
Resvr PS-7-WW	0	0	0.00
Resvr PS-8-WW	0	0	0.00
Resvr PS-9-WW	0	0	0.00

City of Fellsmere Pressurized Sanitary Transmission System

All Pump Stations Running

Node ID	Demand	Pressure	
	GPM	psi	ft
Junc 1	0	37.67	87.02
Junc 10	0	24.86	57.43
Junc 100	0	37.65	86.97
Junc 105	0	37.7	87.09
Junc 107	0	38.09	87.99
Junc 11	0	36.52	84.36
Junc 110	0	37.71	87.11
Junc 12	0	42.82	98.91
Junc 120	0	37.44	86.49
Junc 13	0	61.86	142.90
Junc 130	0	36.7	84.78
Junc 14	0	36.91	85.26
Junc 140	0	36.4	84.08
Junc 15	0	37.74	87.18
Junc 150	0	35.41	81.80
Junc 16	0	37.58	86.81
Junc 160	0	33.01	76.25
Junc 17	0	38.95	89.97
Junc 170	0	34.07	78.70
Junc 172	0	32.56	75.21
Junc 18	0	34.12	78.82
Junc 180	0	25.36	58.58
Junc 185	0	24.04	55.53
Junc 2	0	33.92	78.36
Junc 200	0	34.21	79.03
Junc 210	0	36.51	84.34
Junc 220	0	38.06	87.92
Junc 280	0	50.67	117.05
Junc 290	0	55.13	127.35
Junc 350	0	38.2	88.24
Junc 370	0	39.28	90.74
Junc 4	0	43.21	99.82
Junc 400	0	54.44	125.76
Junc 410	0	54.7	126.36
Junc 420	0	55.63	128.51
Junc 430	0	59.43	137.28
Junc 440	0	61.2	141.37
Junc 450	0	53.71	124.07
Junc 500	0	36.68	84.73
Junc 510	0	36.69	84.75
Junc 6	0	36.98	85.42
Junc 600	0	37.96	87.69
Junc 7	0	39.11	90.34
Junc 8	0	35.58	82.19

City of Fellsmere Pressurized Sanitary Transmission System

All Pump Stations Running

Node ID	Demand	Pressure	
	GPM	psi	ft
Junc 9	0	30.57	70.62
Junc PS-1	0	41.72	96.37
Junc PS-10	0	25.31	58.47
Junc PS-11	0	36.67	84.71
Junc PS-12	0	45.72	105.61
Junc PS-13	0	66.76	154.22
Junc PS-14	0	39.85	92.05
Junc PS-15	0	42.53	98.24
Junc PS-16	0	37.7	87.09
Junc PS-17	0	39.01	90.11
Junc PS-18	0	32.34	74.71
Junc PS-2	0	39.03	90.16
Junc PS-4	0	47.48	109.68
Junc PS-5	0	58.67	135.53
Junc PS-6	0	37.1	85.70
Junc PS-7	0	39.65	91.59
Junc PS-8	0	35.78	82.65
Junc PS-9	0	31.34	72.40
Resvr PS-10-WW	-34.83	0	0.00
Resvr PS-11-WW	-10.38	0	0.00
Resvr PS-12-WW	-94.95	0	0.00
Resvr PS-13-WW	-63.22	0	0.00
Resvr PS-14-WW	-8.91	0	0.00
Resvr PS-15-WW	-8.85	0	0.00
Resvr PS-16-WW	-9.16	0	0.00
Resvr PS-17-WW	-41.52	0	0.00
Resvr PS-18-WW	-30.24	0	0.00
Resvr PS-1-WW	-21.52	0	0.00
Resvr PS-2-WW	-47.7	0	0.00
Resvr PS-3-WW	591.38	0	0.00
Resvr PS-4-WW	-107.15	0	0.00
Resvr PS-5-WW	-44.23	0	0.00
Resvr PS-6-WW	-9.37	0	0.00
Resvr PS-7-WW	-21.35	0	0.00
Resvr PS-8-WW	-12.43	0	0.00
Resvr PS-9-WW	-25.57	0	0.00

```
*****
*                                     *
*                               E P A N E T                               *
*                               Hydraulic and Water Quality               *
*                               Analysis for Pipe Networks                 *
*                               Version 2.0                               *
*****
```

Input File: Fellsmere2018_WWModel_Varied.net

City of Fellsmere Pressurized Sanitary Transmission System

Link - Node Table:

Link ID	Start Node	End Node	Length ft	Diameter in
P-172	172	180	2936	8
P-100	100	105	670	6
P-2	2	160	270	3
P-1	1	100	760	6
PS-2-EQLOSS	PS-2	2	100	2
PS-1-EQLOSS	PS-1	1	100	4
PS-4-EQLOSS	PS-4	4	100	4
P-160	160	170	30	8
P-4	4	220	1392	4
P-5	290	280	1200	4
PS-5-EQLOSS	PS-5	290	100	3
P-280	280	220	3391	4
P-220	220	210	830	6
P-210	210	200	1240	6
P-200	200	170	73	6
P-6	6	110	120	2
PS-6-EQLOSS	PS-6	6	100	2
PS-7-EQLOSS	PS-7	7	100	2
P-7	7	120	305	2
PS-8-EQLOSS	PS-8	8	100	2
P-8	8	150	85	2
PS-9-EQLOSS	PS-9	9	100	2
P-9	9	180	684	2
PS-12-EQLOSS	PS-12	12	100	4
P-12	12	370	185	6
P-370	370	350	2631	6
P-350	350	130	3656	6
P-110	110	120	595	6
P-120	120	130	1166	6
P-130	130	140	158	6
P-140	140	150	485	6
P-150	150	160	580	6
P-180	180	185	496	8
P-185	185	PS-3-WW	7744	8
PS-10-EQLOSS	PS-10	10	100	2.5
P-10	10	185	180	2.5
PS-11-EQLOSS	PS-11	11	100	2

Page 2 City of Fellsmere Pressurized Sanitary Transmission System
 Link - Node Table: (continued)

Link ID	Start Node	End Node	Length ft	Diameter in	
P-11	11	140	85	2	
P-400	400	290	655	4	
P-410	410	400	145	3	
P-420	420	410	211	3	
P-430	430	420	634	3	
P-440	440	430	320	3	
P-13	13	440	40	3	
P-450	450	400	171	4	
P-13-EQLOSS	PS-13	13	100	3	
P-500	500	100	35	4	
P-510	510	500	272	4	
P-14	14	510	206	2	
PS-14-EQLOSS	PS-14	14	100	2	
P-105	105	107	155	6	
PS-15-EQLOSS	PS-15	15	100	2	
P-15	15	600	8	3	
P-600	600	105	1747	3	
PS-16-EQLOSS	PS-16	16	100	2	
P-16	16	107	320	2	
P-17	17	100	1015	4	
PS-17-EQLOSS	PS-17	17	100	4	
PS-18-EQLOSS	PS-18	18	100	2	
P-18	18	172	150	2	
P-170	170	172	690	8	
P-107	107	110	1020	6	
PS#2	PS-2-WW	PS-2	#N/A	#N/A	Pump
PS#1	PS-1-WW	PS-1	#N/A	#N/A	Pump
PS#4	PS-4-WW	PS-4	#N/A	#N/A	Pump
PS#5	PS-5-WW	PS-5	#N/A	#N/A	Pump
PS#6	PS-6-WW	PS-6	#N/A	#N/A	Pump
PS#7	PS-7-WW	PS-7	#N/A	#N/A	Pump
PS#8	PS-8-WW	PS-8	#N/A	#N/A	Pump
PS#9	PS-9-WW	PS-9	#N/A	#N/A	Pump
PS#12	PS-12-WW	PS-12	#N/A	#N/A	Pump
PS#10	PS-10-WW	PS-10	#N/A	#N/A	Pump
PS#11	PS-11-WW	PS-11	#N/A	#N/A	Pump
PS#13	PS-13-WW	PS-13	#N/A	#N/A	Pump
PS#14	PS-14-WW	PS-14	#N/A	#N/A	Pump
PS#15	PS-15-WW	PS-15	#N/A	#N/A	Pump
PS#16	PS-16-WW	PS-16	#N/A	#N/A	Pump
PS#17	PS-17-WW	PS-17	#N/A	#N/A	Pump
PS#18	PS-18-WW	PS-18	#N/A	#N/A	Pump

Page 3 City of Fellsmere Pressurized Sanitary Transmission System
Energy Usage:

Pump	Usage Factor	Avg. Effic.	Kw-hr /Mgal	Avg. Kw	Peak Kw	Cost /day
PS#2	100.00	75.00	377.28	1.08	1.08	0.00
PS#1	100.00	75.00	403.30	0.52	0.52	0.00
PS#4	100.00	75.00	458.98	2.95	2.95	0.00
PS#5	100.00	75.00	567.23	1.51	1.51	0.00
PS#6	100.00	75.00	358.68	0.20	0.20	0.00
PS#7	100.00	75.00	366.59	0.47	0.47	0.00
PS#8	100.00	75.00	345.88	0.26	0.26	0.00
PS#9	100.00	75.00	286.19	0.44	0.44	0.00
PS#12	100.00	75.00	441.94	2.52	2.52	0.00
PS#10	100.00	75.00	232.12	0.49	0.49	0.00
PS#11	100.00	75.00	354.46	0.22	0.22	0.00
PS#13	100.00	75.00	645.38	2.45	2.45	0.00
PS#14	100.00	75.00	385.29	0.21	0.21	0.00
PS#15	100.00	75.00	411.16	0.22	0.22	0.00
PS#16	100.00	75.00	364.45	0.20	0.20	0.00
PS#17	100.00	75.00	406.46	1.01	1.01	0.00
PS#18	100.00	75.00	321.03	0.58	0.58	0.00
Demand Charge:						0.00
Total Cost:						0.00

Node Results:

Node ID	Demand GPM	Head ft	Pressure psi	Quality
100	0.00	108.39	37.65	0.00
160	0.00	98.69	33.01	0.00
2	0.00	100.78	33.92	0.00
1	0.00	108.43	37.67	0.00
PS-2	0.00	106.37	39.03	0.00
PS-1	0.00	108.48	41.72	0.00
4	0.00	119.72	43.21	0.00
PS-4	0.00	120.57	47.48	0.00
170	0.00	98.64	34.07	0.00
220	0.00	107.83	38.06	0.00
200	0.00	98.95	34.21	0.00
110	0.00	107.03	37.71	0.00
120	0.00	106.41	37.44	0.00
140	0.00	104.01	36.40	0.00
210	0.00	104.27	36.51	0.00
290	0.00	147.24	55.13	0.00
280	0.00	136.94	50.67	0.00
8	0.00	102.11	35.58	0.00
150	0.00	101.72	35.41	0.00
185	0.00	75.47	24.04	0.00
180	0.00	78.53	25.36	0.00

Page 4 City of Fellsmere Pressurized Sanitary Transmission System
 Node Results: (continued)

Node ID	Demand GPM	Head ft	Pressure psi	Quality	
PS-5	0.00	147.91	58.67	0.00	
6	0.00	107.35	36.98	0.00	
PS-6	0.00	107.63	37.10	0.00	
7	0.00	110.25	39.11	0.00	
PS-7	0.00	111.51	39.65	0.00	
PS-8	0.00	102.57	35.78	0.00	
PS-9	0.00	92.32	31.34	0.00	
9	0.00	90.56	30.57	0.00	
12	0.00	110.82	42.82	0.00	
PS-12	0.00	111.50	45.72	0.00	
370	0.00	110.65	39.28	0.00	
350	0.00	108.15	38.20	0.00	
130	0.00	104.69	36.70	0.00	
PS-10	0.00	78.41	25.31	0.00	
10	0.00	77.36	24.86	0.00	
PS-11	0.00	104.62	36.67	0.00	
11	0.00	104.29	36.52	0.00	
400	0.00	149.35	54.44	0.00	
410	0.00	151.24	54.70	0.00	
420	0.00	153.99	55.63	0.00	
430	0.00	162.27	59.43	0.00	
440	0.00	166.44	61.20	0.00	
PS-13	0.00	168.27	66.76	0.00	
450	0.00	149.35	53.71	0.00	
13	0.00	166.97	61.86	0.00	
500	0.00	108.39	36.68	0.00	
510	0.00	108.41	36.69	0.00	
14	0.00	108.93	36.91	0.00	
PS-14	0.00	109.18	39.85	0.00	
105	0.00	108.01	37.70	0.00	
PS-15	0.00	108.85	42.53	0.00	
15	0.00	108.61	37.74	0.00	
600	0.00	108.61	37.96	0.00	
PS-16	0.00	109.00	37.70	0.00	
16	0.00	108.74	37.58	0.00	
17	0.00	109.89	38.95	0.00	
PS-17	0.00	110.03	39.01	0.00	
PS-18	0.00	101.14	32.34	0.00	
18	0.00	98.74	34.12	0.00	
172	0.00	95.14	32.56	0.00	
107	0.00	107.90	38.09	0.00	
PS-3-WW	591.38	22.00	0.00	0.00	Reservoir
PS-2-WW	-47.70	16.30	0.00	0.00	Reservoir
PS-1-WW	-21.52	12.20	0.00	0.00	Reservoir
PS-4-WW	-107.15	11.00	0.00	0.00	Reservoir
PS-5-WW	-44.23	12.50	0.00	0.00	Reservoir
PS-6-WW	-9.37	22.00	0.00	0.00	Reservoir

Page 5 City of Fellsmere Pressurized Sanitary Transmission System
Node Results: (continued)

Node ID	Demand GPM	Head ft	Pressure psi	Quality
PS-7-WW	-21.35	24.00	0.00	0.00 Reservoir
PS-8-WW	-12.43	20.00	0.00	0.00 Reservoir
PS-9-WW	-25.57	24.00	0.00	0.00 Reservoir
PS-12-WW	-94.95	6.00	0.00	0.00 Reservoir
PS-10-WW	-34.83	23.00	0.00	0.00 Reservoir
PS-11-WW	-10.38	20.00	0.00	0.00 Reservoir
PS-13-WW	-63.22	14.20	0.00	0.00 Reservoir
PS-14-WW	-8.91	17.20	0.00	0.00 Reservoir
PS-15-WW	-8.85	10.70	0.00	0.00 Reservoir
PS-16-WW	-9.16	22.00	0.00	0.00 Reservoir
PS-17-WW	-41.52	13.00	0.00	0.00 Reservoir
PS-18-WW	-30.24	24.50	0.00	0.00 Reservoir

Link Results:

Link ID	Flow GPM	Velocity fps	Unit Headloss ft/Kft	Status
P-172	530.99	3.39	5.66	Open
P-100	71.96	0.82	0.57	Open
P-2	47.70	2.17	7.75	Open
P-1	21.52	0.24	0.06	Open
PS-2-EQLOSS	47.70	4.87	55.84	Open
PS-1-EQLOSS	21.52	0.55	0.44	Open
PS-4-EQLOSS	107.15	2.74	8.54	Open
P-160	286.16	1.83	1.80	Open
P-4	107.15	2.74	8.54	Open
P-5	107.44	2.74	8.58	Open
PS-5-EQLOSS	44.23	2.01	6.74	Open
P-280	107.44	2.74	8.58	Open
P-220	214.59	2.43	4.29	Open
P-210	214.59	2.43	4.29	Open
P-200	214.59	2.43	4.29	Open
P-6	9.37	0.96	2.74	Open
PS-6-EQLOSS	9.37	0.96	2.74	Open
PS-7-EQLOSS	21.35	2.18	12.60	Open
P-7	21.35	2.18	12.60	Open
PS-8-EQLOSS	12.43	1.27	4.63	Open
P-8	12.43	1.27	4.63	Open
PS-9-EQLOSS	25.57	2.61	17.59	Open
P-9	25.57	2.61	17.59	Open
PS-12-EQLOSS	94.95	2.42	6.83	Open
P-12	94.95	1.08	0.95	Open
P-370	94.95	1.08	0.95	Open
P-350	94.95	1.08	0.95	Open
P-110	99.34	1.13	1.03	Open
P-120	120.69	1.37	1.48	Open

Page 6 City of Fellsmere Pressurized Sanitary Transmission System
 Link Results: (continued)

Link ID	Flow GPM	Velocity fps	Unit Headloss ft/Kft	Status
P-130	215.64	2.45	4.33	Open
P-140	226.03	2.56	4.72	Open
P-150	238.45	2.71	5.21	Open
P-180	556.55	3.55	6.17	Open
P-185	591.38	3.77	6.90	Open
PS-10-EQLOSS	34.83	2.28	10.52	Open
P-10	34.83	2.28	10.52	Open
PS-11-EQLOSS	10.38	1.06	3.31	Open
P-11	10.38	1.06	3.31	Open
P-400	63.22	1.61	3.21	Open
P-410	63.22	2.87	13.05	Open
P-420	63.22	2.87	13.05	Open
P-430	63.22	2.87	13.05	Open
P-440	63.22	2.87	13.05	Open
P-13	63.22	2.87	13.05	Open
P-450	0.00	0.00	0.00	Open
P-13-EQLOSS	63.22	2.87	13.05	Open
P-500	8.91	0.23	0.09	Open
P-510	8.91	0.23	0.09	Open
P-14	8.91	0.91	2.50	Open
PS-14-EQLOSS	8.91	0.91	2.50	Open
P-105	80.80	0.92	0.70	Open
PS-15-EQLOSS	8.85	0.90	2.46	Open
P-15	8.85	0.40	0.34	Open
P-600	8.85	0.40	0.34	Open
PS-16-EQLOSS	9.16	0.94	2.63	Open
P-16	9.16	0.94	2.63	Open
P-17	41.52	1.06	1.48	Open
PS-17-EQLOSS	41.52	1.06	1.48	Open
PS-18-EQLOSS	30.24	3.09	24.01	Open
P-18	30.24	3.09	24.01	Open
P-170	500.75	3.20	5.07	Open
P-107	89.97	1.02	0.86	Open
PS#2	47.70	0.00	-90.07	Open Pump
PS#1	21.52	0.00	-96.28	Open Pump
PS#4	107.15	0.00	-109.57	Open Pump
PS#5	44.23	0.00	-135.41	Open Pump
PS#6	9.37	0.00	-85.63	Open Pump
PS#7	21.35	0.00	-87.51	Open Pump
PS#8	12.43	0.00	-82.57	Open Pump
PS#9	25.57	0.00	-68.32	Open Pump
PS#12	94.95	0.00	-105.50	Open Pump
PS#10	34.83	0.00	-55.41	Open Pump
PS#11	10.38	0.00	-84.62	Open Pump
PS#13	63.22	0.00	-154.07	Open Pump
PS#14	8.91	0.00	-91.98	Open Pump
PS#15	8.85	0.00	-98.15	Open Pump

Page 7 City of Fellsmere Pressurized Sanitary Transmission System
Link Results: (continued)

Link ID	Flow GPM	Velocity fps	Unit Headloss ft/Kft	Status
PS#16	9.16	0.00	-87.00	Open Pump
PS#17	41.52	0.00	-97.03	Open Pump
PS#18	30.24	0.00	-76.64	Open Pump

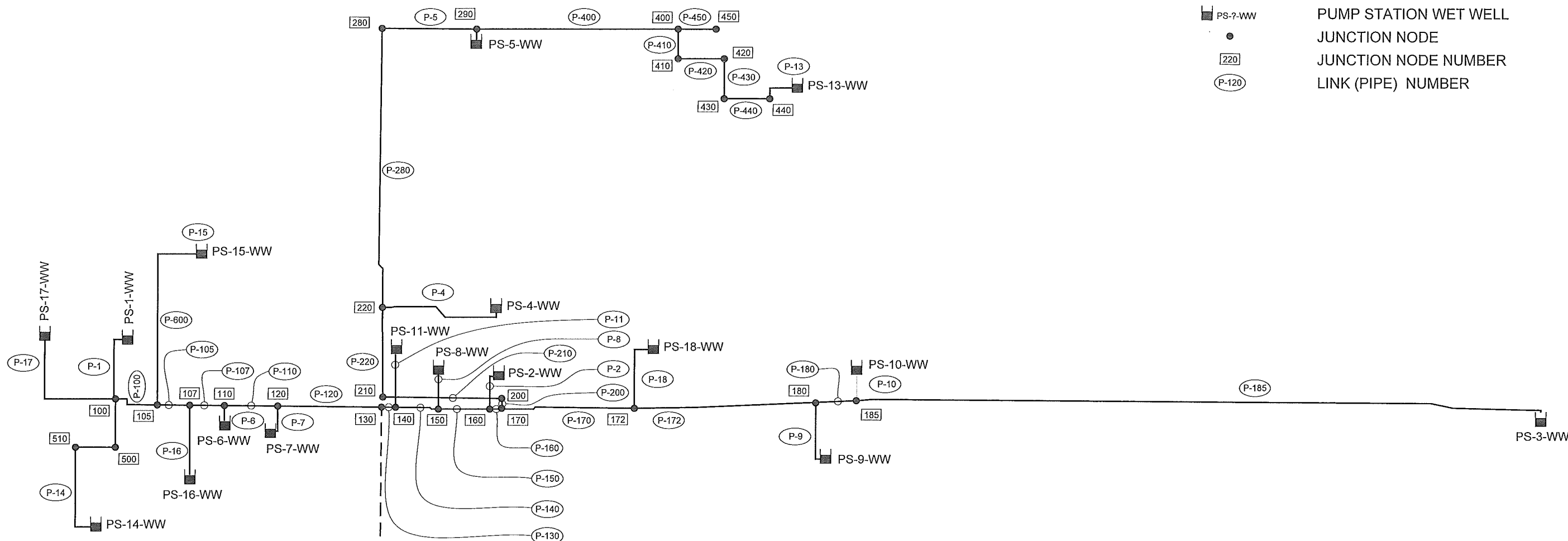
APPENDIX “B”

UPDATED NODAL MAP

NORTH
NOT TO SCALE

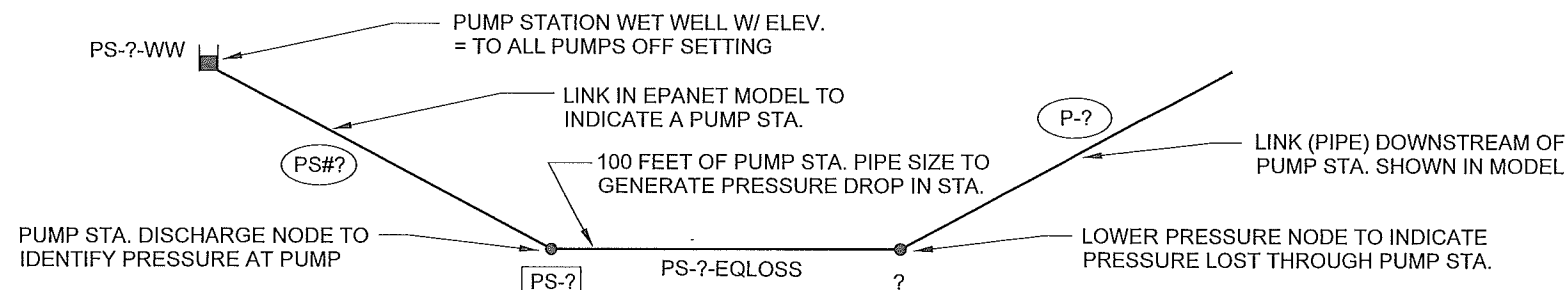
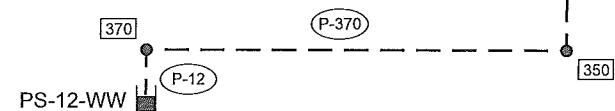
LEGEND

- PS-?-WW PUMP STATION WET WELL
- JUNCTION NODE
- JUNCTION NODE NUMBER
- LINK (PIPE) NUMBER



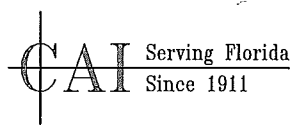
TYPICAL PUMP STATION LINK AND NODE ASSIGNMENTS

1. EACH PUMP STATION IS REPRESENTED BY A WET WELL SYMBOL = (PS-?-WW) WITH A STATION NUMBER IN PLACE OF THE ?. THIS SYMBOL REPRESENTS THE FOLLOWING NODES AND LINKS (PIPES) AT EACH PUMP STATION LOCATION.



NO.	DATE	DESCRIPTION	BY
1	11/18	REVISED PER 2018 UPDATE	KWN

CARTER ASSOCIATES, INC.
CONSULTING ENGINEERS AND LAND SURVEYORS
1708 21st STREET, VERO BEACH, FL 32960
PHONE: (772) 562-4191 LB 205 FAX: (772) 562-7180



Public Works Department
21 South Cypress Street
Fellsmere, FL 32948
PH: 772-571-1902 FAX: 772-571-1904

CITY OF FELLSMERE
WASTEWATER TRANSMISSION SYSTEM
MAP OF MODEL NODES AND LINKS

SHEET
M-1



City of Fellsmere Utilities
 Pumped Sanitary Transmission System
 Hydraulic Model Map

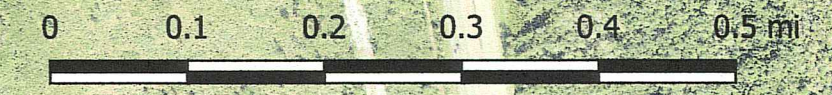
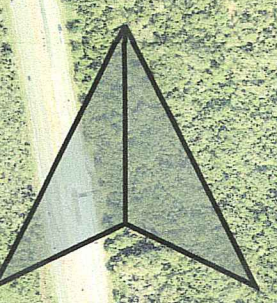
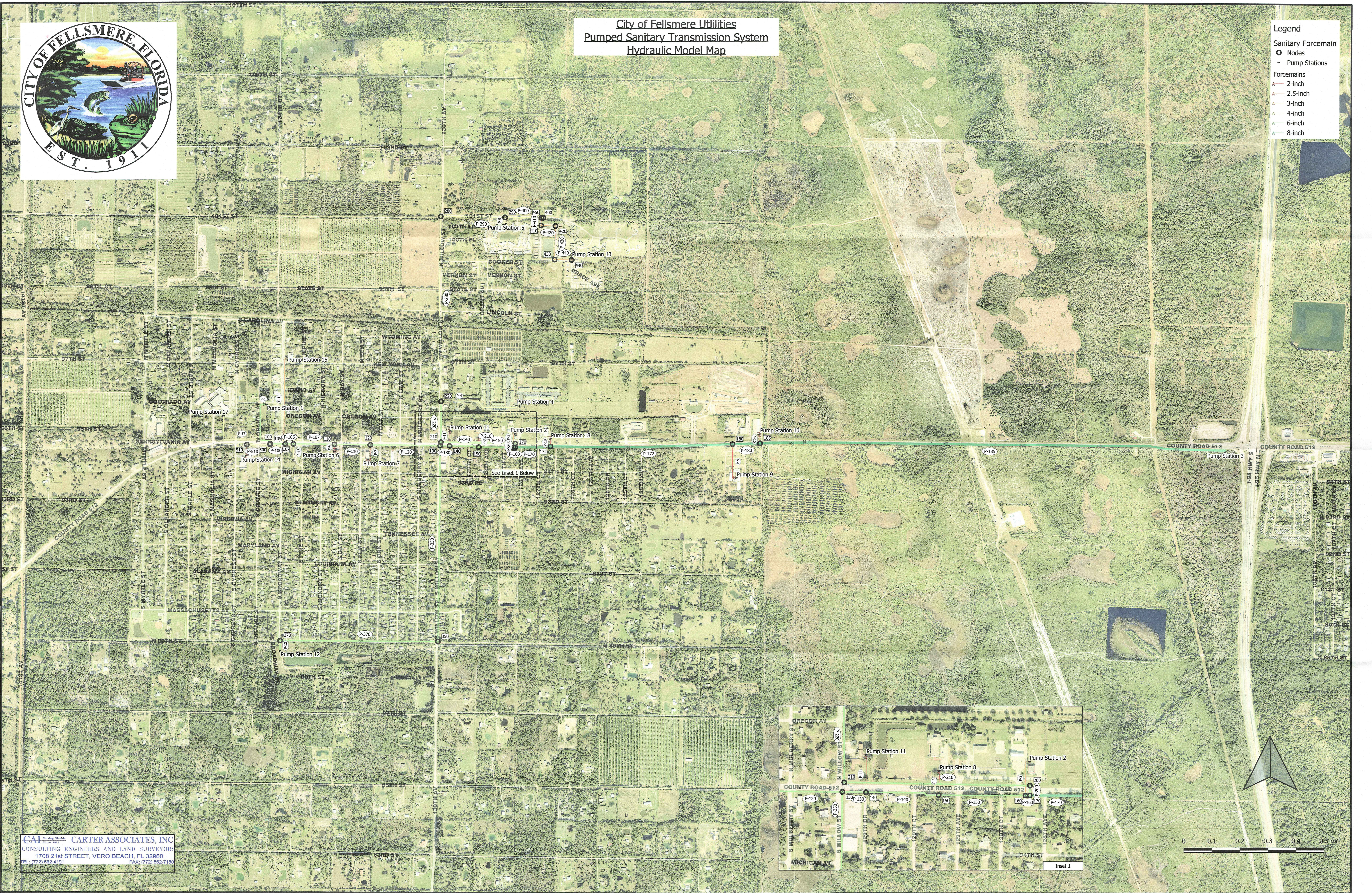
Legend

Sanitary Forcemain

- Nodes
- Pump Stations

Forcemains

- 2-inch
- 2.5-inch
- 3-inch
- 4-inch
- 6-inch
- 8-inch



CAI CONSULTING ENGINEERS AND LAND SURVEYORS
 1708 21st STREET, VERO BEACH, FL 32960
 TEL: (772) 562-4191 FAX: (772) 562-7180

